

# DUSP6 Rabbit Polyclonal Antibody

## Catalog No: RA20258

### Basic Information

Host species	Rabbit
Applications	WB
Species Cross-Reactivity	H,R,M
Specificity	Antibody can detects endogenous DUSP6 protein.
Recommended dilutions	WB: 1:1,000-5,000 Optimal dilutions should be determined by the end user.

### Applications

Formulation	Antigen Affinity Purified IgG in PBS, pH 7.4, containing 0.02% sodium azide as Preservative and 50% Glycerol.
Storage	Store at -20°C. Avoid repeated freeze-thaw cycles.
Concentration	1 mg/ml
Clonality	Polyclonal

### Background

Dual specificity phosphatase 6, HH19, MKP3

/

\_x0007\_

\_x0007\_

\_x0007\_ Western blot analysis of 1) HepG2, 2)3T3 , 3) Rat Heart Tissue with DUSP6 Rabbit pAb TDY555 diluted at 1:3,000.

Alternative Names

\_x0007\_

\_x0007\_

\_x0007\_

\_x0007\_

\_x0007\_

\_x0007\_

\_x0007\_

\_x0007\_

\_x0007\_

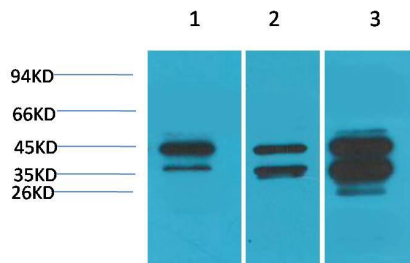
Observed band

42,44

---

Human Gene ID	1848
Human Swiss-Prot Number	Q16828
Background	

Selected Validation Data



Western blot analysis of 1) HepG2, 2)3T3 , 3) Rat Heart Tissue  
with DUSP6 Rabbit pAb diluted at 1:3,000.