

KV11.3 Rabbit Polyclonal Antibody(A263)

Catalog No: RA20257

Basic Information

Host species	Rabbit
Applications	WB,IHC
Species Cross-Reactivity	H,R,M
Specificity	Antibody can detects endogenous KV11.3 protein.
Recommended dilutions	WB: 1:1,000-2,000 IHC: 1:100-200 Optimal dilutions should be determined by the end user.

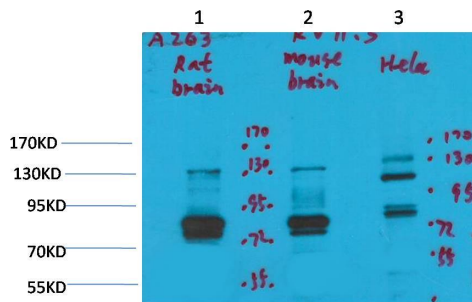
Applications

Formulation	Antigen Affinity Purified IgG in PBS, pH 7.4, containing 0.02% sodium azide as Preservative and 50% Glycerol.
Storage	Store at -20°C. Avoid repeated freeze-thaw cycles.
Concentration	1 mg/ml
Clonality	Polyclonal

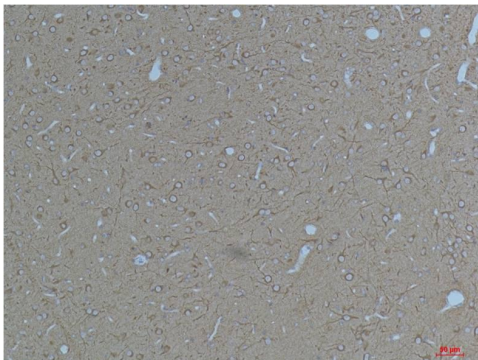
Background

	EAG2,H EAG2,KCNH5
	/
Alternative Names	_x0007_ _x0007_ _x0007_Western blot analysis of 1) Rat Brain Tissue, 2) Mouse Brain Tissue , 3) Hela with KV11.3 Rabbit pAb TDY554 diluted at 1:2,000. _x0007_Immunohistochemical analysis of paraffin-embedded Rat BrainTissue using Kv11.3 (TDY554) Rabbit pAb d
Observed band	83135
Human Gene ID	90134
Human Swiss-Prot Number	Q9NS40
Background	

Selected Validation Data



Western blot analysis of 1) Rat Brain Tissue, 2) Mouse Brain Tissue, 3) HeLa with KV11.3 Rabbit pAb diluted at 1:2,000



Immunohistochemical analysis of paraffin-embedded Rat Brain Tissue using Kv11.3 Rabbit pAb diluted at 1:200.