

# KV11.1 Rabbit Polyclonal Antibody(A262)

## Catalog No: RA20256

### Basic Information

Host species	Rabbit
Applications	WB,IHC
Species Cross-Reactivity	R,M
Specificity	Antibody can detects endogenous KV11.1 protein.
Recommended dilutions	WB: 1:1,000-2,000    IHC: 1:100-200 Optimal dilutions should be determined by the end user.

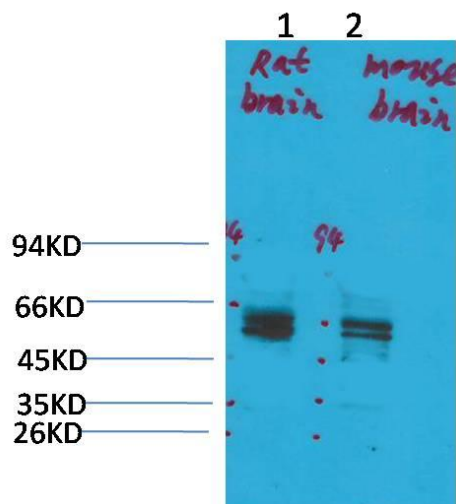
### Applications

Formulation	Antigen Affinity Purified IgG in PBS, pH 7.4, containing 0.02% sodium azide as Preservative and 50% Glycerol.
Storage	Store at -20°C. Avoid repeated freeze-thaw cycles.
Concentration	1 mg/ml
Clonality	Polyclonal

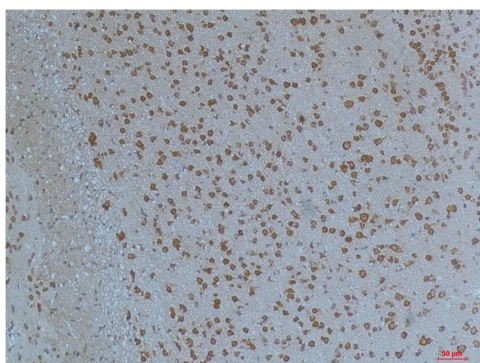
### Background

	LQT2,HERG
Alternative Names	/ _x0007_ _x0007_ _x0007_Western blot analysis of 1) Rat Brain Tissue, 2)Mouse Brain Tissue with KV11.1 Rabbit pAb TDY553 diluted at 1:2,000. _x0007_Immunohistochemical analysis of paraffin-embedded Mouse BrainTissue using Kv11.1 (TDY553) Rabbit pAb diluted at 1:200.
Observed band	62
Human Gene ID	169522
Human Swiss-Prot Number	Q8TDN2
Background	

Selected Validation Data



Western blot analysis of 1) Rat Brain Tissue, 2) Mouse Brain Tissue with KV11.1 Rabbit pAb diluted at 1:2,000.



Immunohistochemical analysis of paraffin-embedded Mouse Brain Tissue using Kv11.1 Rabbit pAb diluted at 1:200.