

KV10.2 Rabbit Polyclonal Antibody(A260)

Catalog No: RA20255

Basic Information

Host species	Rabbit
Applications	WB,IHC
Species Cross-Reactivity	H,R,M
Specificity	Antibody can detects endogenous KV10.2 protein.
Recommended dilutions	WB: 1:1,000-2,000 IHC: 1:100-200 Optimal dilutions should be determined by the end user.

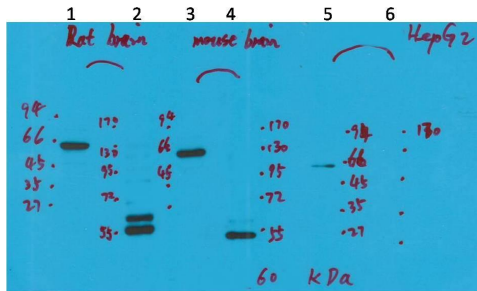
Applications

Formulation	Antigen Affinity Purified IgG in PBS, pH 7.4, containing 0.02% sodium azide as Preservative and 50% Glycerol.
Storage	Store at -20°C. Avoid repeated freeze-thaw cycles.
Concentration	1 mg/ml
Clonality	Polyclonal

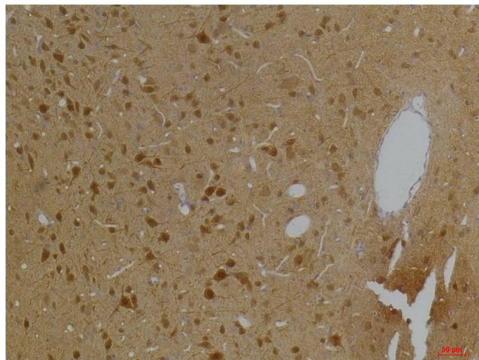
Background

	EAG2,H EAG2,KCNH5
	/
	x0007/
Alternative Names	_x0007_ _x0007_Western blot analysis of 1) Rat Brain Tissue-Low Molecular Protein Marker, 2)Rat Brain Tissue-High Molecular Protein Marker, 3) Mouse Brain Tissue-Low Molecular Protein Marker, 4) Mouse Brain Tissue- High Molecular Protein Marke
Observed band	60
Human Gene ID	238271
Human Swiss-Prot Number	Q8NCM2
Background	

Selected Validation Data



Western blot analysis of 1) Rat Brain Tissue-Low Molecular Protein Marker, 2)Rat Brain Tissue-High Molecular Protein Marker, 3) Mouse Brain Tissue-Low Molecular Protein Marker, 4) Mouse Brain Tissue- High Molecular Protein Marker, 5) HepG2-Low Molecular P



Immunohistochemical analysis of paraffin-embedded Rat BrainTissue using Kv10.2 Rabbit pAb diluted at 1:200.