

# KV10.1 Rabbit Polyclonal Antibody(A259)

## Catalog No: RA20254

### Basic Information

Host species	Rabbit
Applications	IHC
Species Cross-Reactivity	H,R,M
Specificity	Antibody can detects endogenous KV10.1 protein.
Recommended dilutions	IHC: 1:100-200 Optimal dilutions should be determined by the end user.

### Applications

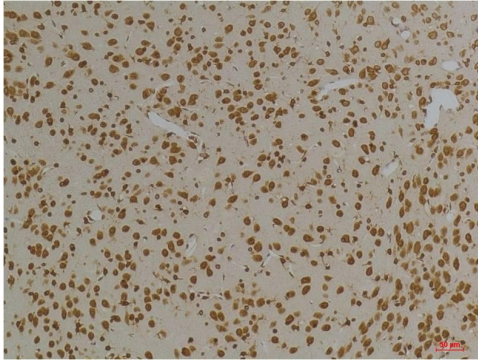
Formulation	Antigen Affinity Purified IgG in PBS, pH 7.4, containing 0.02% sodium azide as Preservative and 50% Glycerol.
Storage	Store at -20°C. Avoid repeated freeze-thaw cycles.
Concentration	1 mg/ml
Clonality	Polyclonal

### Background

KCNG3,KV6.3,Voltage-gated potassium channel subunit kv10.1

Alternative Names	/
	_x0007_/
	_x0007_
	_x0007_Immunohistochemical analysis of paraffin-embedded Rat BrainTissue using Kv10.1 (TDY551) Rabbit pAb diluted at 1:200.
	_x0007_Immunohistochemical analysis of paraffin-embedded Mouse BrainTissue
	u
Observed band	50
Human Gene ID	170850
Human Swiss-Prot Number	Q8TAE7
Background	

## Selected Validation Data



Immunohistochemical analysis of paraffin-embedded Rat BrainTissue using Kv10.1 Rabbit pAb diluted at 1:200.



Immunohistochemical analysis of paraffin-embedded Mouse BrainTissue using Kv10.1 Rabbit pAb diluted at 1:200.