

KV1.8 Rabbit Polyclonal Antibody(A258)

Catalog No: RA20253

Basic Information

Host species	Rabbit
Applications	WB,IHC
Species Cross-Reactivity	H,R,M
Specificity	Antibody can detects endogenous KV1.8 protein.
Recommended dilutions	WB: 1:1,000-2,000 IHC: 1:100-200 Optimal dilutions should be determined by the end user.

Applications

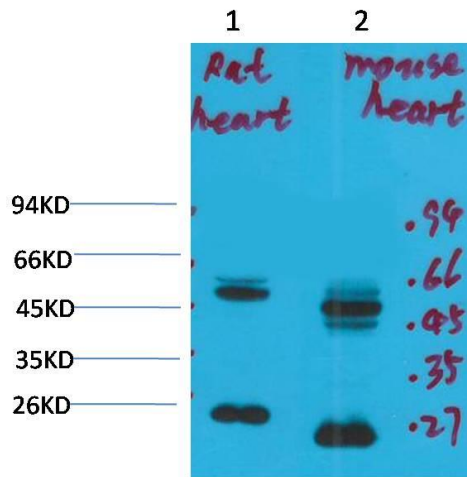
Formulation	Antigen Affinity Purified IgG in PBS, pH 7.4, containing 0.02% sodium azide as Preservative and 50% Glycerol.
Storage	Store at -20°C. Avoid repeated freeze-thaw cycles.
Concentration	1 mg/ml
Clonality	Polyclonal

Background

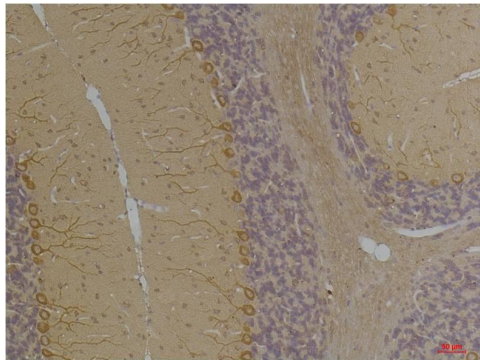
KCNA10, voltage gated potassium channel protein kv1.8

Alternative Names	/ _x0007_ _x0007_ _x0007_Western blot analysis of 1) Rat Brain Tissue, 2) Mouse Brain Tissue with KV1.8 Rabbit pAb TDY550 diluted at 1:2,000. _x0007_Immunohistochemical analysis of paraffin-embedded Rat BrainTissue using Kv
Observed band	58
Human Gene ID	3744
Human Swiss-Prot Number	Q16322
Background	

Selected Validation Data



Western blot analysis of 1) Rat Brain Tissue, 2) Mouse Brain Tissue with KV1.8 Rabbit pAb diluted at 1:2,000.



Immunohistochemical analysis of paraffin-embedded Rat Brain Tissue using Kv1.8 Rabbit pAb diluted at 1:200.