

# KV1.5 Rabbit Polyclonal Antibody(A257)

## Catalog No: RA20252

### Basic Information

Host species	Rabbit
Applications	WB
Species Cross-Reactivity	H
Specificity	Antibody can detects endogenous KV1.5 protein.
Recommended dilutions	WB: 1:1,000-2,000 Optimal dilutions should be determined by the end user.

### Applications

Formulation	Antigen Affinity Purified IgG in PBS, pH 7.4, containing 0.02% sodium azide as Preservative and 50% Glycerol.
Storage	Store at -20°C. Avoid repeated freeze-thaw cycles.
Concentration	1 mg/ml
Clonality	Polyclonal

### Background

KCNA5,PCN5,Potassium channel 1, voltage gated potassium channel protein kv1.5

/

\_x0007\_

\_x0007\_

\_x0007\_ Western blot analysis of 293T with KV1.5 Rabbit pAb TDY549 diluted at 1:2,000.

\_x0007\_

Alternative Names

\_x0007\_

\_x0007\_

\_x0007\_

\_x0007\_

\_x0007\_

\_x0007\_

\_x0007\_

\_x0007\_

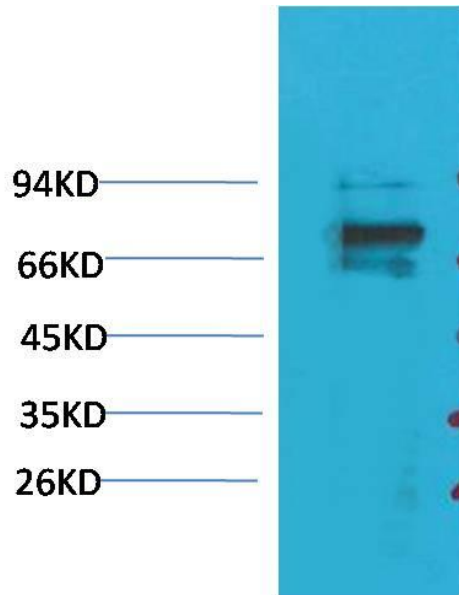
Observed band

67

---

Human Gene ID	3741
Human Swiss-Prot Number	P22460
Background	

Selected Validation Data



Western blot analysis of 293T with KV1.5 Rabbit pAb TDY549 diluted at 1:2,000.