

KV1.3 Rabbit Polyclonal Antibody(A256)

Catalog No: RA20251

Basic Information

Host species	Rabbit
Applications	WB
Species Cross-Reactivity	H,R,M
Specificity	Antibody can detects endogenous KV1.3 protein.
Recommended dilutions	WB: 1:1,000-2,000 Optimal dilutions should be determined by the end user.

Applications

Formulation	Antigen Affinity Purified IgG in PBS, pH 7.4, containing 0.02% sodium azide as Preservative and 50% Glycerol.
Storage	Store at -20°C. Avoid repeated freeze-thaw cycles.
Concentration	1 mg/ml
Clonality	Polyclonal

Background

HGK5,KCNA3,MK3,Potassium channel 3, voltage gated potassium channel protein kv1.3

/

x0007

x0007

x0007 Western blot analysis of 1) Rat Brain Tissue, 2) Mouse Brain Tissue with KV1.3 Rabbit pAb TDY548 diluted at 1:2,000.

Alternative Names

x0007

x0007

x0007

x0007

x0007

x0007

x0007

x0007

x0007

Observed band

64

Human Gene ID

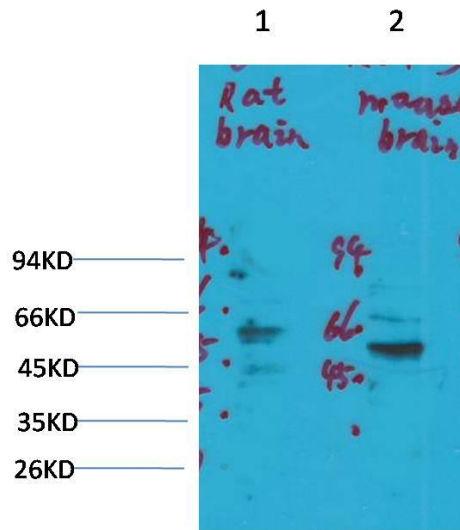
3738

Human Swiss-Prot Number

P22001

Background

Selected Validation Data



Western blot analysis of 1) Rat Brain Tissue, 2) Mouse Brain Tissue with KV1.3 Rabbit pAb diluted at 1:2,000.