

KV β 1 Rabbit Polyclonal Antibody(A255)

Catalog No: RA20250

Basic Information

Host species	Rabbit
Applications	IHC
Species Cross-Reactivity	H,R,M
Specificity	Antibody can detects endogenous KV β 1 protein.
Recommended dilutions	IHC: 1:100-200 Optimal dilutions should be determined by the end user.

Applications

Formulation	Antigen Affinity Purified IgG in PBS, pH 7.4, containing 0.02% sodium azide as Preservative and 50% Glycerol.
Storage	Store at -20°C. Avoid repeated freeze-thaw cycles.
Concentration	1 mg/ml
Clonality	Polyclonal

Background

hKvb3,KCNA1B,KV beta 1,Voltage-gated potassium channel beta 1 subunit

Alternative Names

/

x0007/

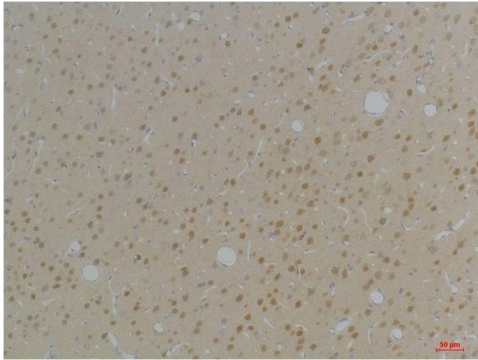
x0007

_x0007_Immunohistochemical analysis of paraffin-embedded Rat BrainTissue using Kvb1 (TDY547) Rabbit pAb diluted at 1:200.

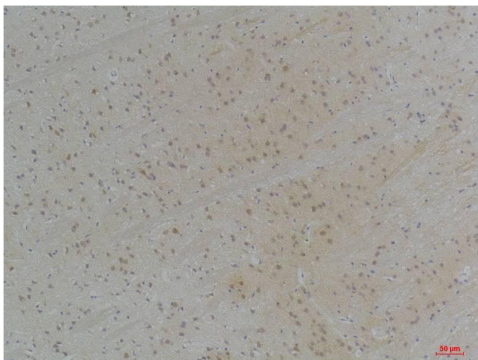
_x0007_Immunohistochemical analysis of paraffin-embedded Mouse Brai

Observed band	50
Human Gene ID	7881
Human Swiss-Prot Number	Q14722
Background	

Selected Validation Data



Immunohistochemical analysis of paraffin-embedded Rat BrainTissue using Kvb1 (TDY547) Rabbit pAb diluted at 1:200.



Immunohistochemical analysis of paraffin-embedded Mouse BrainTissue using Kvb1 (TDY547) Rabbit pAb diluted at 1:200.