

Kir4.1 Rabbit Polyclonal Antibody(A252)

Catalog No: RA20249

Basic Information

Host species	Rabbit
Applications	IHC
Species Cross-Reactivity	H,R,M
Specificity	Antibody can detects endogenous Kir4.1 protein.
Recommended dilutions	IHC: 1:100-200 Optimal dilutions should be determined by the end user.

Applications

Formulation	Antigen Affinity Purified IgG in PBS, pH 7.4, containing 0.02% sodium azide as Preservative and 50% Glycerol.
Storage	Store at -20°C. Avoid repeated freeze-thaw cycles.
Concentration	1 mg/ml
Clonality	Polyclonal

Background

BIRK10,KCNJ10,potassium channel

Alternative Names

/

x0007/

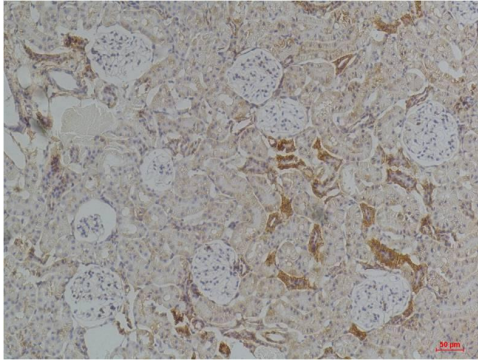
x0007

_x0007_Immunohistochemical analysis of paraffin-embedded Rat KidneyTissue using Kir4.1 (TDY546) Rabbit pAb diluted at 1:200.

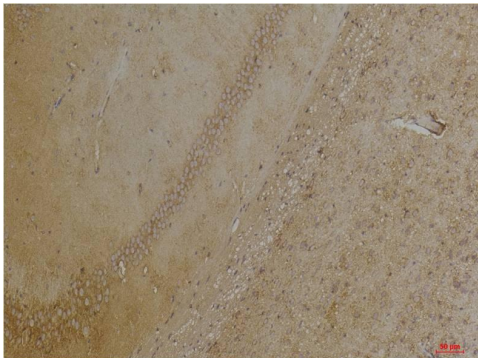
_x0007_Immunohistochemical analysis of paraffin-embedded Mouse BrainTissue using Kir4.1 (TDY546) Rabbi

Observed band	42
Human Gene ID	3766
Human Swiss-Prot Number	P78508
Background	

Selected Validation Data



Immunohistochemical analysis of paraffin-embedded Rat Kidney Tissue using Kir4.1 Rabbit pAb diluted at 1:200



Immunohistochemical analysis of paraffin-embedded Mouse Brain Tissue using Kir4.1 Rabbit pAb diluted at 1:200.