

KChIP3 Rabbit Polyclonal Antibody(A250)

Catalog No: RA20248

Basic Information

Host species	Rabbit
Applications	IHC
Species Cross-Reactivity	H,R,M
Specificity	Antibody can detects endogenous KChIP3 protein.
Recommended dilutions	IHC: 1:100-200 Optimal dilutions should be determined by the end user.

Applications

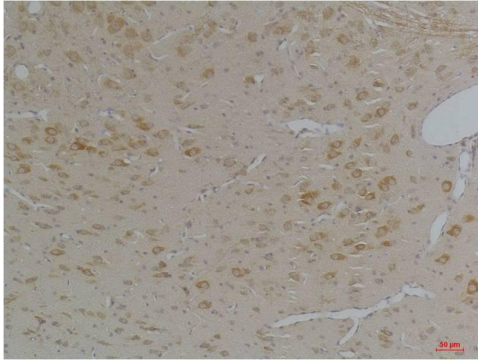
Formulation	Antigen Affinity Purified IgG in PBS, pH 7.4, containing 0.02% sodium azide as Preservative and 50% Glycerol.
Storage	Store at -20°C. Avoid repeated freeze-thaw cycles.
Concentration	1 mg/ml
Clonality	Polyclonal

Background

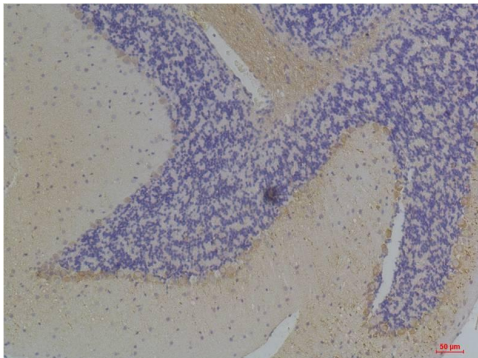
KCNIP3, A type potassium channel modulatory protein 3

Alternative Names	/ _x0007_ _x0007_ _x0007_Immunohistochemical analysis of paraffin-embedded Rat BrainTissue using KChIP3 (TDY545) Rabbit pAb diluted at 1:200. _x0007_Immunohistochemical analysis of paraffin-embedded Mouse BrainTissue using
Observed band	29
Human Gene ID	30818
Human Swiss-Prot Number	Q9Y2W7
Background	

Selected Validation Data



Immunohistochemical analysis of paraffin-embedded Rat BrainTissue using KCHIP3 Rabbit pAb diluted at 1:200.



Immunohistochemical analysis of paraffin-embedded Mouse BrainTissue using KCHIP3 Rabbit pAb diluted at 1:200.