

KCHIP1 Rabbit Polyclonal Antibody(A249)

Catalog No: RA20247

Basic Information

Host species	Rabbit
Applications	IHC
Species Cross-Reactivity	H,M
Specificity	Antibody can detects endogenous KCHIP1 protein.
Recommended dilutions	IHC: 1:100-200 Optimal dilutions should be determined by the end user.

Applications

Formulation	Antigen Affinity Purified IgG in PBS, pH 7.4, containing 0.02% sodium azide as Preservative and 50% Glycerol.
Storage	Store at -20°C. Avoid repeated freeze-thaw cycles.
Concentration	1 mg/ml
Clonality	Polyclonal

Background

KCNIP1,MGC9,MGC95,A type potassium channel modulatory protein 1

/

x0007

x0007

x0007 Immunohistochemical analysis of paraffin-embedded Mouse BrainTissue using KCHIP1 (TDY544) Rabbit pAb diluted at 1:200.

x0007

Alternative Names

x0007

x0007

x0007

x0007

x0007

x0007

x0007

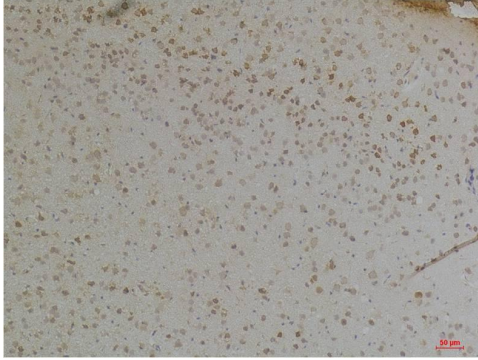
x0007

Observed band

30

Human Gene ID	30820
Human Swiss-Prot Number	Q9NZI2
Background	

Selected Validation Data



Immunohistochemical analysis of paraffin-embedded Mouse BrainTissue using KCHIP1 Rabbit pAb diluted at 1:200.