

SLC12A4 Rabbit Polyclonal Antibody(A248)

Catalog No: RA20246

Basic Information

Host species	Rabbit
Applications	WB,IHC
Species Cross-Reactivity	H,R,M
Specificity	Antibody can detects endogenous SLC12A4 protein.
Recommended dilutions	WB: 1:1,000-2,000 IHC: 1:100-200 Optimal dilutions should be determined by the end user.

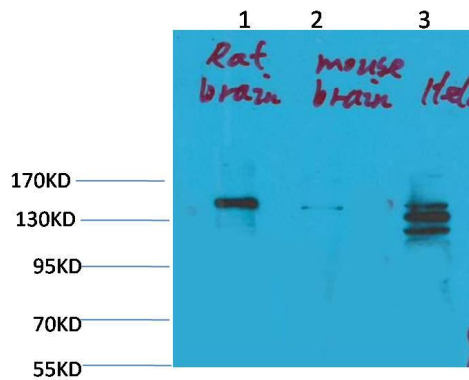
Applications

Formulation	Antigen Affinity Purified IgG in PBS, pH 7.4, containing 0.02% sodium azide as Preservative and 50% Glycerol.
Storage	Store at -20°C. Avoid repeated freeze-thaw cycles.
Concentration	1 mg/ml
Clonality	Polyclonal

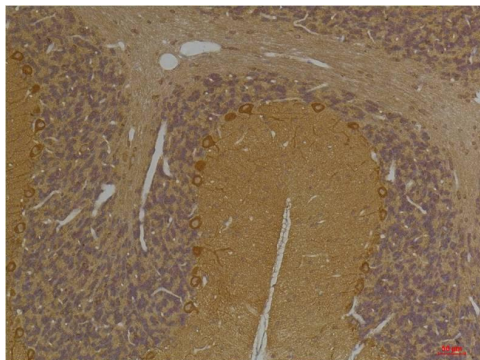
Background

Alternative Names	Electroneutral potassium chloride cotransporter 1,hKCC1,KCC1, s12A4,FLJ40489
Observed band	150
Human Gene ID	6560
Human Swiss-Prot Number	Q9UP95
Background	Mediates electroneutral potassium-chloride cotransport when activated by cell swelling. May contribute to cell volume homeostasis in single cells.

Selected Validation Data



Western blot analysis of 1) Rat Brain Tissue, 2) Mouse Brain Tissue, 3) HeLa with SLC12A4 Rabbit pAb diluted at 1:2,000.



Immunohistochemical analysis of paraffin-embedded Rat Brain Tissue using SLC12A4 Rabbit pAb diluted at 1:200.