

KCNN2(SK2) Rabbit Polyclonal Antibody(A244)

Catalog No: RA20243

Basic Information

Host species	Rabbit
Applications	WB,IHC
Species Cross-Reactivity	H,R,M
Specificity	Antibody can detects endogenous KCNN2(SK2) protein.
Recommended dilutions	WB: 1:1,000-2,000 IHC: 1:100-200 Optimal dilutions should be determined by the end user.

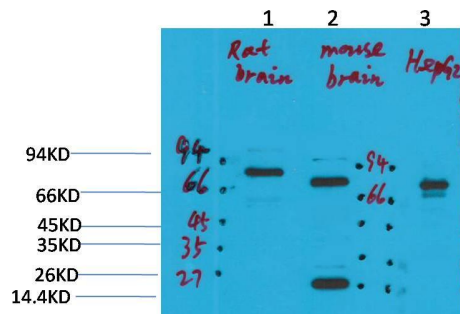
Applications

Formulation	Antigen Affinity Purified IgG in PBS, pH 7.4, containing 0.02% sodium azide as Preservative and 50% Glycerol.
Storage	Store at -20°C. Avoid repeated freeze-thaw cycles.
Concentration	1 mg/ml
Clonality	Polyclonal

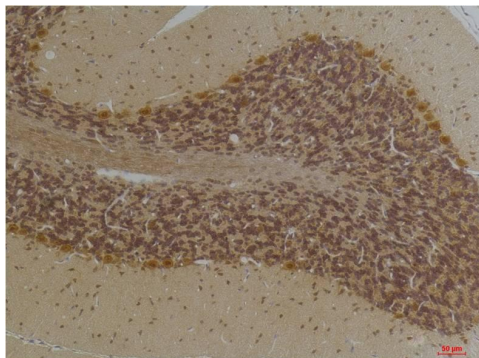
Background

Alternative Names	Kca2.2, hsk2, skca2
Observed band	70,26
Human Gene ID	3781
Human Swiss-Prot Number	Q6PJI0
Background	Forms a voltage-independent potassium channel activated by intracellular calcium. Activation is followed by membrane hyperpolarization.

Selected Validation Data



Western blot analysis of 1) Rat BrainTissue, 2) Mouse Brain Tissue, 3) HepG2 with KCNN2(SK2) Rabbit pAb diluted at 1:2,000.



Immunohistochemical analysis of paraffin-embedded Human BrainTissue using KCNN2(SK2) Rabbit pAb diluted at 1:200.