

# Kv1.1 potassium channel Rabbit Polyclonal Antibody(A243)

## Catalog No: RA20242

### Basic Information

Host species	Rabbit
Applications	WB,IHC
Species Cross-Reactivity	H,R,M
Specificity	Antibody can detects endogenous Kv1.1 potassium channel protein.
Recommended dilutions	WB: 1:1,000-2,000    IHC: 1:100-200 Optimal dilutions should be determined by the end user.

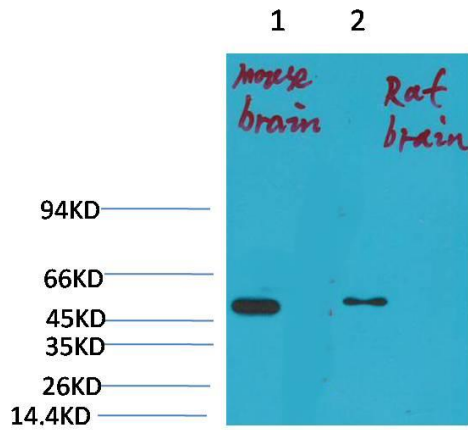
### Applications

Formulation	Antigen Affinity Purified IgG in PBS, pH 7.4, containing 0.02% sodium azide as Preservative and 50% Glycerol.
Storage	Store at -20°C. Avoid repeated freeze-thaw cycles.
Concentration	1 mg/ml
Clonality	Polyclonal

### Background

Alternative Names	AEMK,EA1,HBK1,HUK1,Kcal 1,MK1 RBK1
Observed band	56
Human Gene ID	3736
Human Swiss-Prot Number	Q09470
Background	Mediates the voltage-dependent potassium ion permeability of excitable membranes. Assuming opened or closed conformations in response to the voltage difference across the membrane, the protein forms a potassium-selective channel through which potassium ions may pass in accordance with their electrochemical gradient.

Selected Validation Data



Western blot analysis of 1) Mouse Brain Tissue, 2) Rat Brain Tissue with KV1.1 potassium channel Rabbit pAb diluted at 1:2,000.



Immunohistochemical analysis of paraffin-embedded Mouse Brain Tissue using KV1.1 Potassium Channel Rabbit pAb diluted at 1:200.