

GRIK2(GluR6) Rabbit Polyclonal Antibody(A240)

Catalog No: RA20240

Basic Information

Host species	Rabbit
Applications	IHC
Species Cross-Reactivity	H
Specificity	Antibody can detects endogenous GRIK2(GluR6) protein.
Recommended dilutions	IHC: 1:100-200 Optimal dilutions should be determined by the end user.

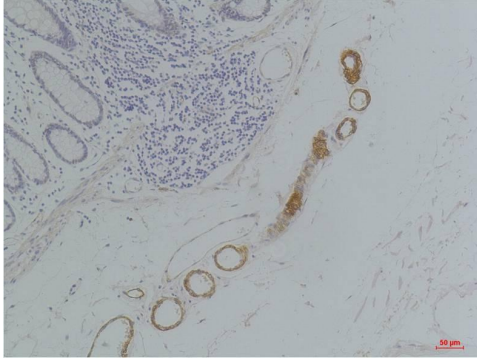
Applications

Formulation	Antigen Affinity Purified IgG in PBS, pH 7.4, containing 0.02% sodium azide as Preservative and 50% Glycerol.
Storage	Store at -20°C. Avoid repeated freeze-thaw cycles.
Concentration	1 mg/ml
Clonality	Polyclonal

Background

Alternative Names	Excitatory amino acid receptor 4, GLR6, GLUK2, Glutamate receptor 6
Observed band	103
Human Gene ID	2898
Human Swiss-Prot Number	Q13002
Background	Ionotropic glutamate receptor. L-glutamate acts as an excitatory neurotransmitter at many synapses in the central nervous system.

Selected Validation Data



Immunohistochemical analysis of paraffin-embedded Human Colon Tissue using GRIK2(GluR6) Rabbit pAb diluted at 1:200.