

KCNK10(TREK-2) Rabbit Polyclonal Antibody(A237)

Catalog No: RA20237

Basic Information

Host species	Rabbit
Applications	WB,IHC
Species Cross-Reactivity	H,R,M
Specificity	Antibody can detects endogenous KCNK10(TREK-2) protein.
Recommended dilutions	WB: 1:1,000-2,000 IHC: 1:100-200 Optimal dilutions should be determined by the end user.

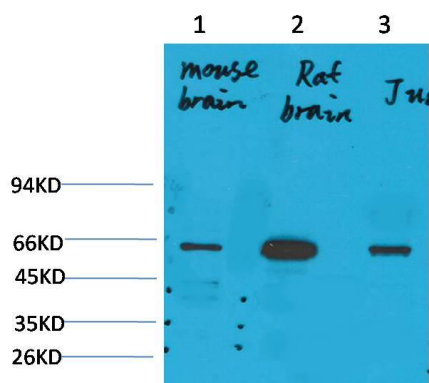
Applications

Formulation	Antigen Affinity Purified IgG in PBS, pH 7.4, containing 0.02% sodium azide as Preservative and 50% Glycerol.
Storage	Store at -20°C. Avoid repeated freeze-thaw cycles.
Concentration	1 mg/ml
Clonality	Polyclonal

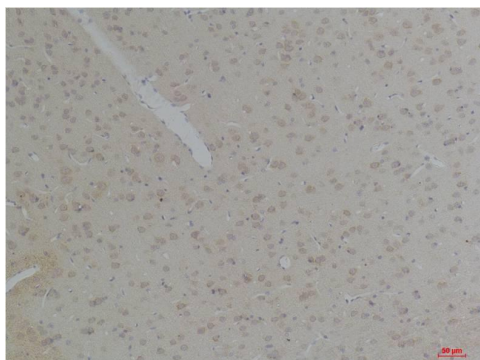
Background

Alternative Names	K2p10.1,KCNKA,Potassium channel subfamily K member 10
Observed band	59
Human Gene ID	54207
Human Swiss-Prot Number	P57789
Background	Outward rectifying potassium channel. Produces rapidly activating and non-inactivating outward rectifier K(+) currents. Activated by arachidonic acid and other naturally occurring unsaturated free fatty acids.

Selected Validation Data



Western blot analysis of 1) Mouse BrainTissue, 2)Rat Brain Tissue , 3) Jurkat with KCNK10(TREK-2) Rabbit pAb diluted at 1:2,000.



Immunohistochemical analysis of paraffin-embedded Rat BrainTissue using KCNK10 (TREK-2) Rabbit pAb diluted at 1:200.