

# Ghrelin Receptor Rabbit Polyclonal Antibody(A232)

**Catalog No: RA20235**

## Basic Information

Host species	Rabbit
Applications	WB,IHC
Species Cross-Reactivity	H,R,M
Specificity	Antibody can detects endogenous Ghrelin Receptor protein.
Recommended dilutions	WB: 1:1,000-2,000    IHC: 1:100-200 Optimal dilutions should be determined by the end user.

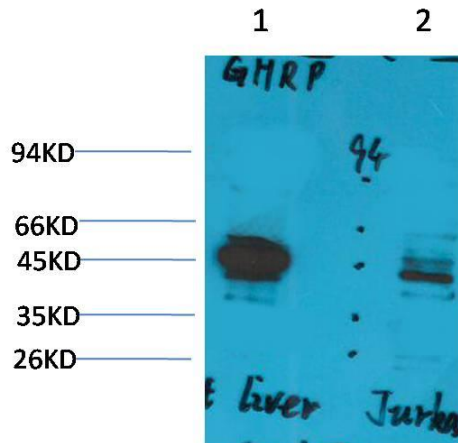
## Applications

Formulation	Antigen Affinity Purified IgG in PBS, pH 7.4, containing 0.02% sodium azide as Preservative and 50% Glycerol.
Storage	Store at -20°C. Avoid repeated freeze-thaw cycles.
Concentration	1 mg/ml
Clonality	Polyclonal

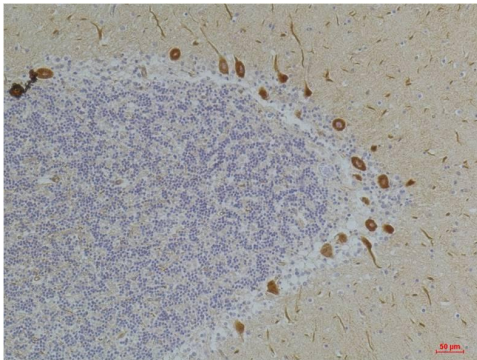
## Background

Alternative Names	GHRP, GHSR, GHRPR
Observed band	41
Human Gene ID	2693
Human Swiss-Prot Number	Q92847
Background	Receptor for ghrelin, coupled to G-alpha-11 proteins. Stimulates growth hormone secretion. Binds also other growth hormone releasing peptides (GHRP).

Selected Validation Data



Western blot analysis of 1) Rat Liver Tissue, 2) Jurkat with Ghrelin Receptor Rabbit pAb diluted at 1:2,000.



Immunohistochemical analysis of paraffin-embedded Human Brain Tissue using Ghrelin Receptor Rabbit pAb diluted at 1:200.