

GALR2 Rabbit Polyclonal Antibody(A231)

Catalog No: RA20234

Basic Information

Host species	Rabbit
Applications	WB
Species Cross-Reactivity	H,R,M
Specificity	Antibody can detects endogenous GALR2 protein.
Recommended dilutions	WB: 1:1,000-2,000 Optimal dilutions should be determined by the end user.

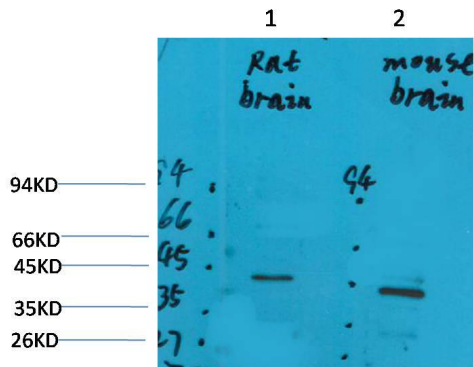
Applications

Formulation	Antigen Affinity Purified IgG in PBS, pH 7.4, containing 0.02% sodium azide as Preservative and 50% Glycerol.
Storage	Store at -20°C. Avoid repeated freeze-thaw cycles.
Concentration	1 mg/ml
Clonality	Polyclonal

Background

Alternative Names	Galanin receptor 2,MGC125983
Observed band	42
Human Gene ID	8811
Human Swiss-Prot Number	O43603
Background	GALR2 Receptor for the hormone galanin and for GALP. The activity of this receptor is mediated by G proteins that activate the phospholipase C/protein kinase C pathway (via G(q)) and that inhibit adenylyl cyclase (via G(i)).

Selected Validation Data



Western blot analysis of 1) Rat Brain Tissue, 2) Mouse Brain Tissue with GALR2 Rabbit pAb diluted at 1:2,000.