

# GABA A Receptor $\alpha$ 2 Rabbit Polyclonal Antibody(A224)

## Catalog No: RA20228

### Basic Information

Host species	Rabbit
Applications	WB,IHC
Species Cross-Reactivity	H,R,M
Specificity	Antibody can detects endogenous GABA A Receptor $\alpha$ 2 protein.
Recommended dilutions	WB: 1:1,000-2,000    IHC: 1:100-200 Optimal dilutions should be determined by the end user.

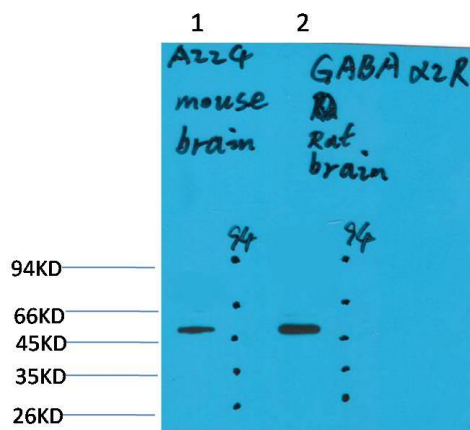
### Applications

Formulation	Antigen Affinity Purified IgG in PBS, pH 7.4, containing 0.02% sodium azide as Preservative and 50% Glycerol.
Storage	Store at -20°C. Avoid repeated freeze-thaw cycles.
Concentration	1 mg/ml
Clonality	Polyclonal

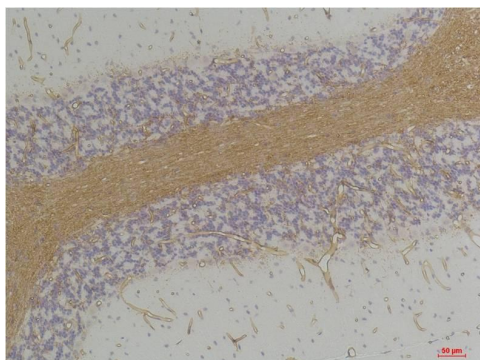
### Background

Alternative Names	GABA, GABRA2,GBRA2, GABA A receptor subunit alpha 2
Observed band	51
Human Gene ID	282236
Human Swiss-Prot Number	P47869
Background	GABA, the major inhibitory neurotransmitter in the vertebrate brain, mediates neuronal inhibition by binding to the GABA/benzodiazepine receptor and opening an integral chloride channel.

Selected Validation Data



Western blot analysis of 1) Mouse Brain Tissue, 2) Rat Brain Tissue with GABA A Receptor  $\alpha 2$  Rabbit pAb diluted at 1:2,000.



Immunohistochemical analysis of paraffin-embedded Rat Brain Tissue using GABA A Receptor  $\alpha 2$  Rabbit pAb diluted at 1:200.