

EAAT2 Rabbit Polyclonal Antibody(A223)

Catalog No: RA20227

Basic Information

Host species	Rabbit
Applications	WB
Species Cross-Reactivity	H,R,M
Specificity	Antibody can detects endogenous EAAT2 protein.
Recommended dilutions	WB: 1:1,000-2,000 Optimal dilutions should be determined by the end user.

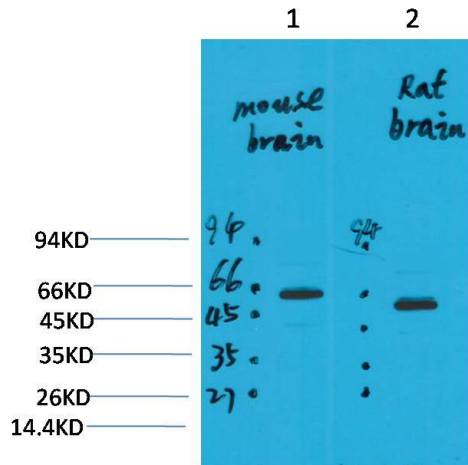
Applications

Formulation	Antigen Affinity Purified IgG in PBS, pH 7.4, containing 0.02% sodium azide as Preservative and 50% Glycerol.
Storage	Store at -20°C. Avoid repeated freeze-thaw cycles.
Concentration	1 mg/ml
Clonality	Polyclonal

Background

Alternative Names	Excitatory amino acid transporter 2, Slcla2, GLT1
Observed band	62
Human Gene ID	6506
Human Swiss-Prot Number	P43004
Background	Excitatory amino acid transporters (EAATs) regulate and maintain extracellular glutamate concentrations below excitotoxic levels. In addition, glutamate transporters may limit the duration of synaptic excitation by an electrogenic process in which the transmitter is cotransported with three sodium ions and one proton, followed by countertransport of a potassium ion.

Selected Validation Data



Western blot analysis of 1) Mouse Brain Tissue, 2)Rat Brain Tissue with EAAT2 Rabbit pAb diluted at 1:2,000.