

# EphA1 Rabbit Polyclonal Antibody(A222)

## Catalog No: RA20226

### Basic Information

Host species	Rabbit
Applications	WB,IHC
Species Cross-Reactivity	H,R,M
Specificity	Antibody can detects endogenous EphA1 protein.
Recommended dilutions	WB: 1:1,000-2,000      IHC: 1:100-200 Optimal dilutions should be determined by the end user.

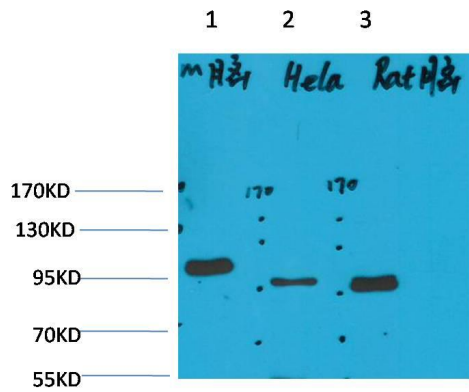
### Applications

Formulation	Antigen Affinity Purified IgG in PBS, pH 7.4, containing 0.02% sodium azide as Preservative and 50% Glycerol.
Storage	Store at -20°C. Avoid repeated freeze-thaw cycles.
Concentration	1 mg/ml
Clonality	Polyclonal

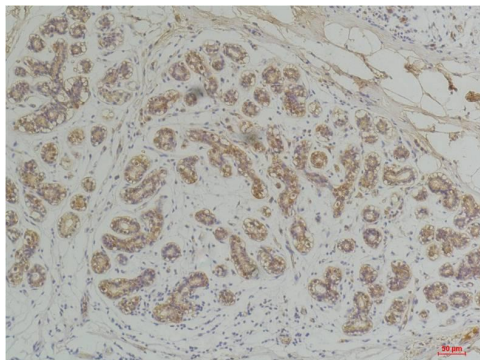
### Background

Alternative Names	EPH Receptor A1, MGC163163, Tyrosin protein kinase receptor EPH
Observed band	110
Human Gene ID	2041
Human Swiss-Prot Number	P21709
Background	The Eph receptors are the largest known family of receptor tyrosine kinases (RTKs). They can be divided into two groups based on sequence similarity and on their preference for a subset of ligands.

Selected Validation Data



Western blot analysis of 1)Mouse Brain Tissue, 2)Hela, 3)Rat Brain Tissue with EphA1 Rabbit pAb diluted at 1:2,000.



Immunohistochemical analysis of paraffin-embedded Human Breast Carcinoma using EphA1 Rabbit pAb diluted at 1:200.