

Endothelin B Receptor Rabbit Polyclonal Antibody(A221)

Catalog No: RA20225

Basic Information

Host species	Rabbit
Applications	IHC
Species Cross-Reactivity	H,R,M
Specificity	Antibody can detects endogenous Endothelin B Receptor protein.
Recommended dilutions	IHC: 1:100-200 Optimal dilutions should be determined by the end user.

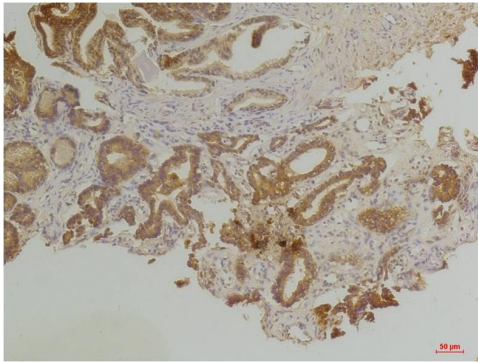
Applications

Formulation	Antigen Affinity Purified IgG in PBS, pH 7.4, containing 0.02% sodium azide as Preservative and 50% Glycerol.
Storage	Store at -20°C. Avoid repeated freeze-thaw cycles.
Concentration	1 mg/ml
Clonality	Polyclonal

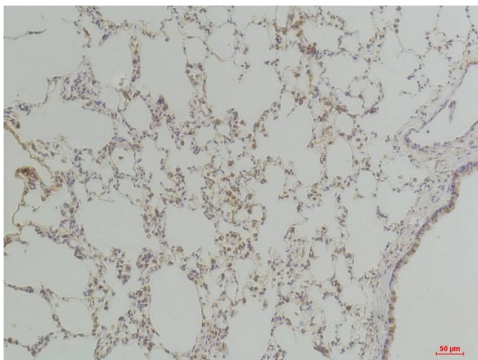
Background

Alternative Names	ABCDS,Ednra,EDNRB,ET-B,ET-BR,HSCR2,WS4A
Observed band	50
Human Gene ID	1910
Human Swiss-Prot Number	P24530
Background	

Selected Validation Data



Immunohistochemical analysis of paraffin-embedded Human Prostate Tissue using Endothelin B Receptor Rabbit pAb diluted at 1:200.



Immunohistochemical analysis of paraffin-embedded Rat Lung Tissue using Endothelin B Receptor Rabbit pAb diluted at 1:200.