

Connexin-26 Rabbit Polyclonal Antibody(A219)

Catalog No: RA20223

Basic Information

Host species	Rabbit
Applications	IHC
Species Cross-Reactivity	H,M
Specificity	Antibody can detects endogenous Connexin-26 protein.
Recommended dilutions	IHC: 1:100-200 Optimal dilutions should be determined by the end user.

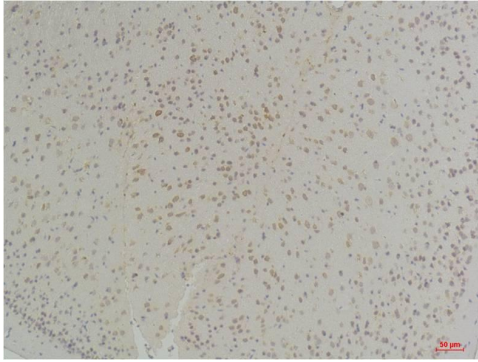
Applications

Formulation	Antigen Affinity Purified IgG in PBS, pH 7.4, containing 0.02% sodium azide as Preservative and 50% Glycerol.
Storage	Store at -20°C. Avoid repeated freeze-thaw cycles.
Concentration	1 mg/ml
Clonality	Polyclonal

Background

Alternative Names	GJB2,CX26,DFNA3,DFNB1, HID,NSRD1,PPK
Observed band	26
Human Gene ID	2706
Human Swiss-Prot Number	P29033
Background	One gap junction consists of a cluster of closely packed pairs of transmembrane channels, the connexons, through which materials of low MW diffuse from one cell to a neighboring cell.

Selected Validation Data



Immunohistochemical analysis of paraffin-embedded Mouse Brain Tissue using Connexin-26 Rabbit pAb diluted at 1:200.