

CNTF Rabbit Polyclonal Antibody(A218)

Catalog No: RA20222

Basic Information

Host species	Rabbit
Applications	WB
Species Cross-Reactivity	H,R,M
Specificity	Antibody can detects endogenous CNTF protein.
Recommended dilutions	WB: 1:1,000-2,000 Optimal dilutions should be determined by the end user.

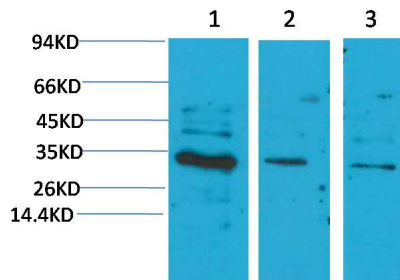
Applications

Formulation	Antigen Affinity Purified IgG in PBS, pH 7.4, containing 0.02% sodium azide as Preservative and 50% Glycerol.
Storage	Store at -20°C. Avoid repeated freeze-thaw cycles.
Concentration	1 mg/ml
Clonality	Polyclonal

Background

Alternative Names	Ciliary neurotrophic factor, HCNTF
Observed band	30
Human Gene ID	1270
Human Swiss-Prot Number	P26441
Background	CNTF is a survival factor for various neuronal cell types. Seems to prevent the degeneration of motor axons after axotomy.

Selected Validation Data



Western blot analysis of 1) Hela, 2) Mouse Brain Tissue, 3) Rat Brain Tissue with CNTF Rabbit pAb diluted at 1:2,000.