

CLIC4 Rabbit Polyclonal Antibody(A217)

Catalog No: RA20221

Basic Information

Host species	Rabbit
Applications	WB,IHC
Species Cross-Reactivity	H,R,M
Specificity	Antibody can detects endogenous CLIC4 protein.
Recommended dilutions	WB: 1:1,000-2,000 IHC: 1:1,000-2,000 Optimal dilutions should be determined by the end user.

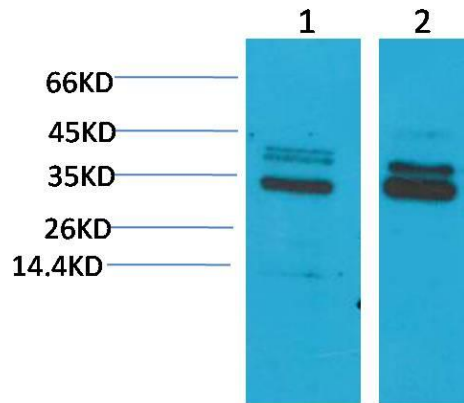
Applications

Formulation	Antigen Affinity Purified IgG in PBS, pH 7.4, containing 0.02% sodium azide as Preservative and 50% Glycerol.
Storage	Store at -20°C. Avoid repeated freeze-thaw cycles.
Concentration	1 mg/ml
Clonality	Polyclonal

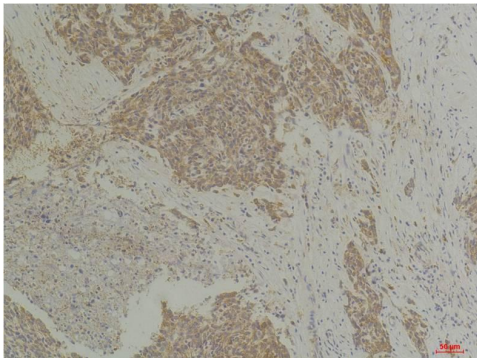
Background

Alternative Names	Chloride channel 4, FLJ38640,MC3S5,mtCLIC,p64H1,HUH1
Observed band	30
Human Gene ID	25932
Human Swiss-Prot Number	Q9Y696
Background	Membrane insertion seems to be redox-regulated and may occur only under oxydizing conditions. Involved in regulation of the cell cycle.

Selected Validation Data



Western blot analysis of 1) Mouse Brain Tissue, 2) Rat Brain Tissue, with CLIC4 Rabbit pAb diluted at 1:2,000.



Immunohistochemical analysis of paraffin-embedded Human Breast Carcinoma using CLIC4 Rabbit pAb diluted at 1:200.