

# CLIC1 Rabbit Polyclonal Antibody(A216)

## Catalog No: RA20220

### Basic Information

Host species	Rabbit
Applications	IHC
Species Cross-Reactivity	H,R,M
Specificity	Antibody can detects endogenous CLIC1 protein.
Recommended dilutions	IHC: 1:1,000-2,000 Optimal dilutions should be determined by the end user.

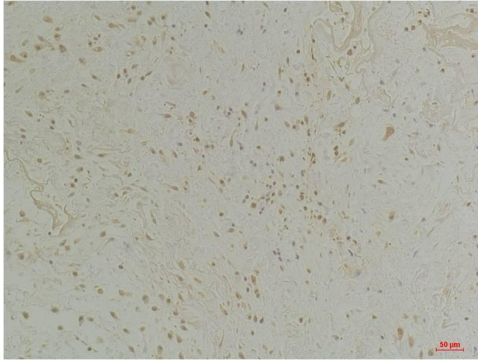
### Applications

Formulation	Antigen Affinity Purified IgG in PBS, pH 7.4, containing 0.02% sodium azide as Preservative and 50% Glycerol.
Storage	Store at -20°C. Avoid repeated freeze-thaw cycles.
Concentration	1 mg/ml
Clonality	Polyclonal

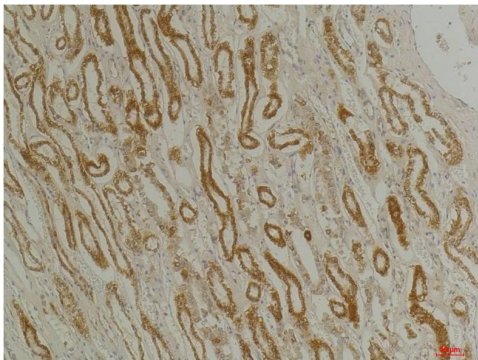
### Background

Alternative Names	Chloride channel ABP, NCC27,p64CLCP, RNCC,G6
Observed band	30
Human Gene ID	1192
Human Swiss-Prot Number	O00299
Background	Membrane insertion seems to be redox-regulated and may occur only under oxydizing conditions. Involved in regulation of the cell cycle.

## Selected Validation Data



Immunohistochemical analysis of paraffin-embedded Human Colon Tissue using CLIC1 Rabbit pAb diluted at 1:200.



Immunohistochemical analysis of paraffin-embedded Human Kidney Tissue using CLIC1 Rabbit pAb diluted at 1:200.