

CaV pan α Rabbit Polyclonal Antibody(A211)

Catalog No: RA20218

Basic Information

Host species	Rabbit
Applications	IHC
Species Cross-Reactivity	H,R,M
Specificity	Antibody can detects endogenous CaV pan α protein.
Recommended dilutions	IHC: 1:100-200 Optimal dilutions should be determined by the end user.

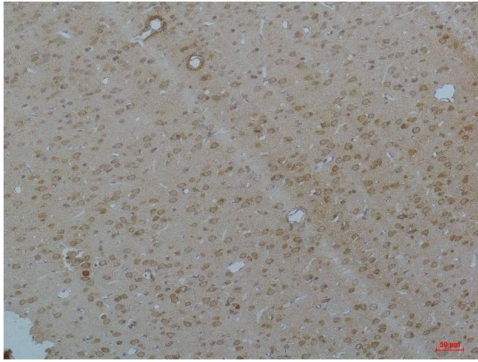
Applications

Formulation	Antigen Affinity Purified IgG in PBS, pH 7.4, containing 0.02% sodium azide as Preservative and 50% Glycerol.
Storage	Store at -20°C. Avoid repeated freeze-thaw cycles.
Concentration	1 mg/ml
Clonality	Polyclonal

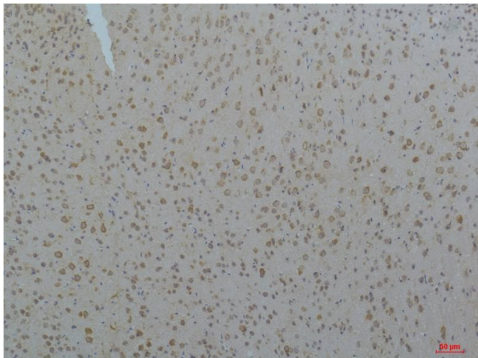
Background

Alternative Names	CACNA1, CAC1C, CCHL1A1, DHPR alpha1,LQT8, TS, alpha-1 polypeptide
Observed band	240
Human Gene ID	775
Human Swiss-Prot Number	Q13936
Background	Voltage-gated Ca ²⁺ channels (CaV), enable the passage of Ca ²⁺ ions in a voltage dependent manner. These heteromeric entities are formed in part by the pore-forming α 1 subunit which determines the biophysical and pharmacological properties of the channel.

Selected Validation Data



Immunohistochemical analysis of paraffin-embedded Rat Brain Tissue using Cav pan α 1 Rabbit pAb diluted at 1:200.



Immunohistochemical analysis of paraffin-embedded Mouse Brain Tissue using Cav pan α 1 Rabbit pAb diluted at 1:200.