

CaV α 2 δ 3 Rabbit Polyclonal Antibody(A210)

Catalog No: RA20217

Basic Information

| | |
|--------------------------|--|
| Host species | Rabbit |
| Applications | WB |
| Species Cross-Reactivity | H,R,M |
| Specificity | Antibody can detects endogenous CaV α 2 δ 3 protein. |
| Recommended dilutions | WB: 1:1,000-2,000 Optimal dilutions should be determined by the end user. |

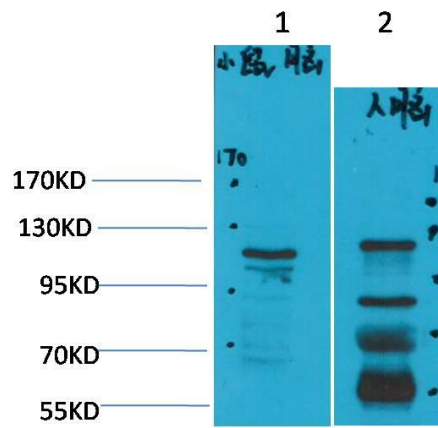
Applications

| | |
|---------------|---|
| Formulation | Antigen Affinity Purified IgG in PBS, pH 7.4, containing 0.02% sodium azide as Preservative and 50% Glycerol. |
| Storage | Store at -20°C. Avoid repeated freeze-thaw cycles. |
| Concentration | 1 mg/ml |
| Clonality | Polyclonal |

Background

| | |
|-------------------------|--|
| Alternative Names | N/A |
| Observed band | 120 |
| Human Gene ID | 55799 |
| Human Swiss-Prot Number | Q8IZS8 |
| Background | Voltage-gated Ca ²⁺ channels (CaV), enable the passage of Ca ²⁺ ions in a voltage dependent manner. These heteromeric entities are formed in part by the pore-forming α 1 subunit which determines the biophysical and pharmacological properties of the channel. |

Selected Validation Data



Western blot analysis of 1) Mouse Brain Tissue, 2) Human Brain Tissue, with CaV α 263 Rabbit pAb diluted at 1:2,000.