

CaV α 2 δ 1 Rabbit Polyclonal Antibody(A193)

Catalog No: RA20210

Basic Information

Host species	Rabbit
Applications	WB, IHC
Species Cross-Reactivity	R
Specificity	Antibody can detects endogenous CaV α 2 δ 1 protein.
Recommended dilutions	WB: 1:1,000-2,000 IHC: 1:100-200 Optimal dilutions should be determined by the end user.

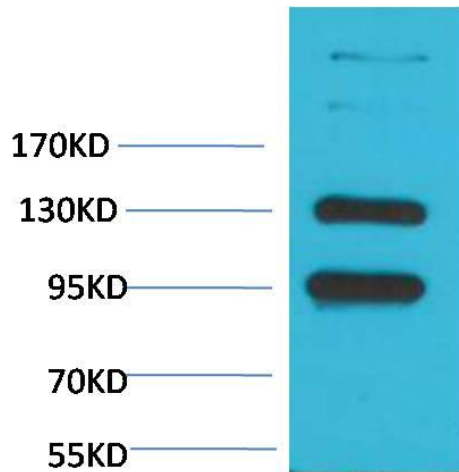
Applications

Formulation	Antigen Affinity Purified IgG in PBS, pH 7.4, containing 0.02% sodium azide as Preservative and 50% Glycerol.
Storage	Store at -20°C. Avoid repeated freeze-thaw cycles.
Concentration	1 mg/ml
Clonality	Polyclonal

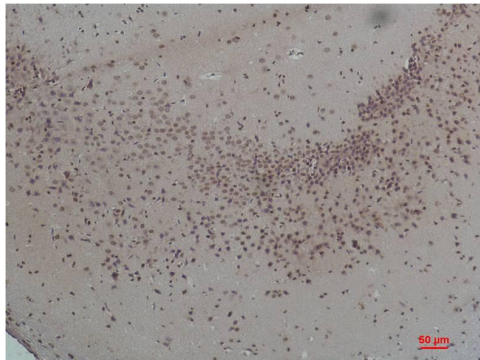
Background

Alternative Names	α 2/ δ Subunit of Voltage-Gated Ca ²⁺ Channel, α 2 Subunit antibody, Cacna2d1 antibody, Calcium channel L type DHPR alpha 2 subunit antibody
Observed band	100-130
Human Gene ID	781
Human Swiss-Prot Number	P54289
Background	Voltage-gated Ca ²⁺ channels (CaV), enable the passage of Ca ²⁺ ions in a voltage dependent manner. These heteromeric entities are formed in part by the pore-forming α 1 subunit which determines the biophysical and pharmacological properties of the channel.

Selected Validation Data



Western blot analysis of Rat Brain Tissue with CaV α 2 δ 1 Rabbit pAb diluted at 1:2,000.



Immunohistochemical analysis of paraffin-embedded Rat Brain Tissue using CaV α 2 δ 1 Rabbit pAb diluted at 1:200.