

CABP2 Rabbit Polyclonal Antibody(A190)

Catalog No: RA20209

Basic Information

Host species	Rabbit
Applications	WB, IHC
Species Cross-Reactivity	H, R, M
Specificity	Antibody can detects endogenous CABP2 protein.
Recommended dilutions	WB: 1:1,000-2,000 IHC: 1:100-200 Optimal dilutions should be determined by the end user.

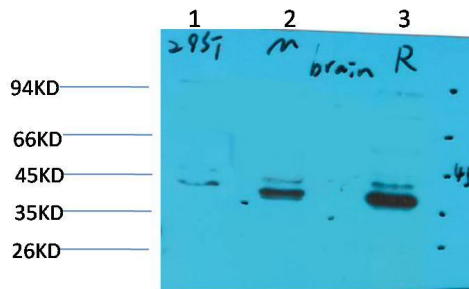
Applications

Formulation	Antigen Affinity Purified IgG in PBS, pH 7.4, containing 0.02% sodium azide as Preservative and 50% Glycerol.
Storage	Store at -20°C. Avoid repeated freeze-thaw cycles.
Concentration	1 mg/ml
Clonality	Polyclonal

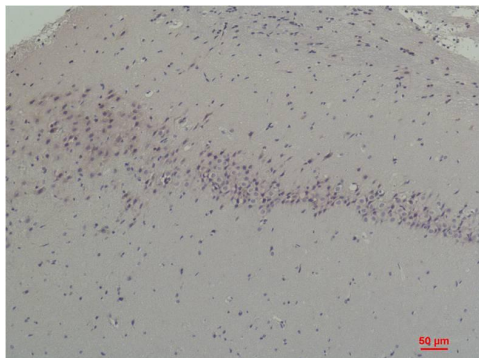
Background

Alternative Names	DFNB93 antibody, CaBP2 antibody, Calcium-Binding Protein 2 antibody
Observed band	37
Human Gene ID	51475
Human Swiss-Prot Number	Q9NPB3
Background	This gene belongs to a subfamily of calcium binding proteins that share similarity to calmodulin. Like calmodulin, these family members can likely stimulate calmodulin-dependent kinase II and the protein phosphatase calcineurin.

Selected Validation Data



Western blot analysis of 1)293T, 2)Mouse Brain Tissue, 3) Rat Brain Tissue with CABP2 Rabbit pAb diluted at 1:2,000.



Immunohistochemical analysis of paraffin-embedded Rat Brain Tissue using CABP2 Rabbit pAb diluted at 1:200.