

Glutamate Receptor 1 Rabbit Polyclonal Antibody(A176)

Catalog No: RA20208

Basic Information

Host species	Rabbit
Applications	WB, IHC
Species Cross-Reactivity	H, R, M
Specificity	Antibody can detects endogenous Glutamate Receptor 1 protein.
Recommended dilutions	WB: 1:1,000-2,000 IHC:1:50-100 Optimal dilutions should be determined by the end user.

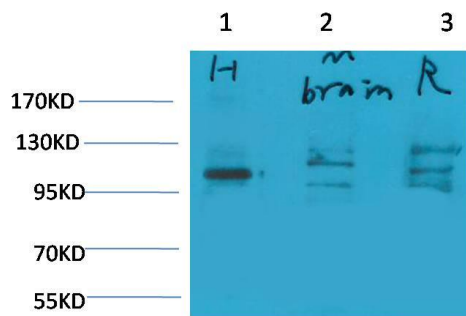
Applications

Formulation	Antigen Affinity Purified IgG in PBS, pH 7.4, containing 0.02% sodium azide as Preservative and 50% Glycerol.
Storage	Store at -20°C. Avoid repeated freeze-thaw cycles.
Concentration	1 mg/ml
Clonality	Polyclonal

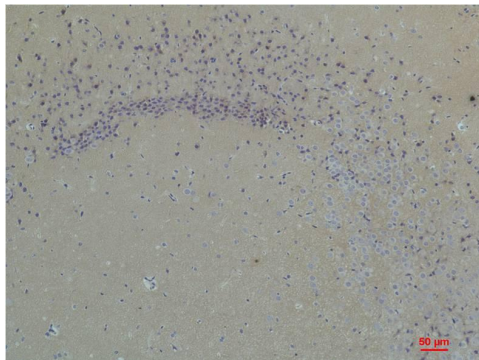
Background

Alternative Names	GLUR1 antibody, GluA1 antibody, Glutamate receptor ionotropic antibody, GluRK1 antibody
Observed band	100
Human Gene ID	2890
Human Swiss-Prot Number	P42261
Background	Glutamate receptor 1 is a protein that in humans is encoded by the GRIA1 gene. The receptor then desensitizes rapidly and enters a transient inactive state, characterized by the presence of bound agonist.

Selected Validation Data



Western blot analysis of 1) Human Brain Tissue, 2) Mouse Brain Tissue, 3) Rat Brain Tissue with Glutamate Receptor 1 Rabbit pAb diluted at 1:2,000.



Immunohistochemical analysis of paraffin-embedded Rat Brain Tissue using Glutamate Receptor 1 Rabbit pAb diluted at 1:200.