

Bombesin Receptor 2 Rabbit Polyclonal Antibody(A187)

Catalog No: RA20206

Basic Information

Host species	Rabbit
Applications	WB, IHC
Species Cross-Reactivity	R, M
Specificity	Antibody can detects endogenous Bombesin Receptor 2 protein.
Recommended dilutions	WB: 1:1,000-2,000 IHC: 1:100-200 Optimal dilutions should be determined by the end user.

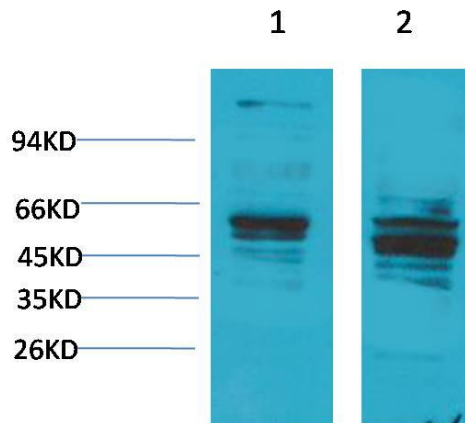
Applications

Formulation	Antigen Affinity Purified IgG in PBS, pH 7.4, containing 0.02% sodium azide as Preservative and 50% Glycerol.
Storage	Store at -20°C. Avoid repeated freeze-thaw cycles.
Concentration	1 mg/ml
Clonality	Polyclonal

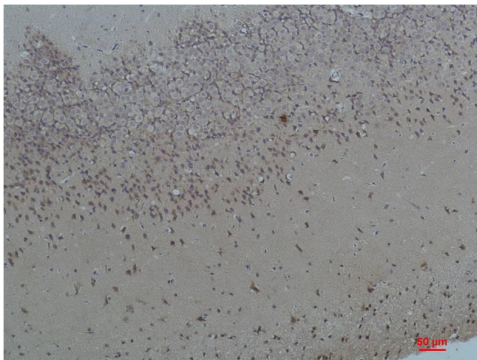
Background

Alternative Names	BB2 antibody
Observed band	50-70
Human Gene ID	2925
Human Swiss-Prot Number	N/A
Background	Bombesin receptor 2 (BB2) is a member of a family of receptors that binds the 14 amino acid peptide, bombesin.

Selected Validation Data



Western blot analysis of 1) Mouse Brain Tissue, 2) Rat Brain Tissue with Bombesin Receptor 2 Rabbit pAb diluted at 1:2,000.



Immunohistochemical analysis of paraffin-embedded Rat Brain Tissue using Bombesin Receptor 2 Rabbit pAb diluted at 1:200.