

Bestrophin-1 Rabbit Polyclonal Antibody(A184)

Catalog No: RA20205

Basic Information

Host species	Rabbit
Applications	WB, IHC
Species Cross-Reactivity	H, R, M
Specificity	Antibody can detects endogenous Bestrophin protein.
Recommended dilutions	WB: 1:1,000-2,000 IHC:1:50-100 Optimal dilutions should be determined by the end user.

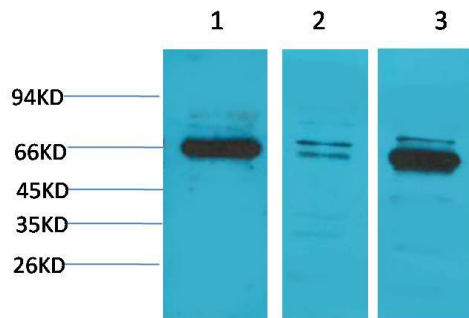
Applications

Formulation	Antigen Affinity Purified IgG in PBS, pH 7.4, containing 0.02% sodium azide as Preservative and 50% Glycerol.
Storage	Store at -20°C. Avoid repeated freeze-thaw cycles.
Concentration	1 mg/ml
Clonality	Polyclonal

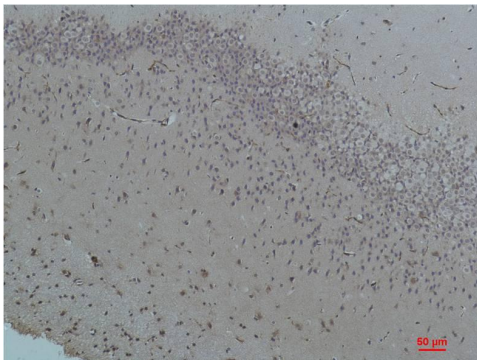
Background

Alternative Names	BEST antibody, Bestrophin-1 antibody, Best disease antibody, VMD 2 antibody
Observed band	67
Human Gene ID	7439
Human Swiss-Prot Number	O76090
Background	Bestrophins were first found by genetic linkage of human-Bestrophin-1 (hBest1) to a juvenile form of macular degeneration called Best vitelliform macular dystrophy (BVMD). Forms calcium-sensitive chloride channels.

Selected Validation Data



Western blot analysis of 1) PC3, 2) Mouse Brain Tissue, 3) Rat Brain Tissue with Bestrophin-1 Rabbit pAb diluted at 1:2,000.



Immunohistochemical analysis of paraffin-embedded Rat Brain Tissue using Bestrophin-1 Rabbit pAb diluted at 1:200.