

BAI1 Rabbit Polyclonal Antibody(A181)

Catalog No: RA20204

Basic Information

Host species	Rabbit
Applications	WB, IHC
Species Cross-Reactivity	H, R, M
Specificity	Antibody can detects endogenous BAI 1 protein.
Recommended dilutions	WB: 1:1,000-2,000 IHC: 1:100-200 Optimal dilutions should be determined by the end user.

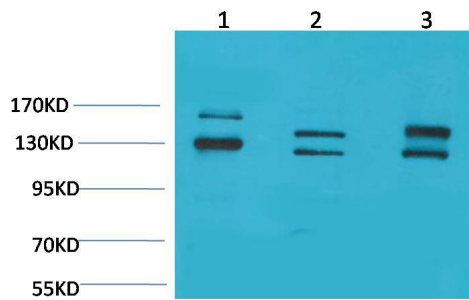
Applications

Formulation	Antigen Affinity Purified IgG in PBS, pH 7.4, containing 0.02% sodium azide as Preservative and 50% Glycerol.
Storage	Store at -20°C. Avoid repeated freeze-thaw cycles.
Concentration	1 mg/ml
Clonality	Polyclonal

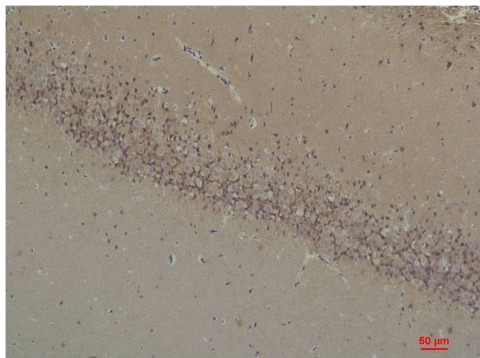
Background

Alternative Names	Brain specific angiogenesis inhibitor 1 antibody, GDAIF antibody, KIAA4089 antibody
Observed band	130-170
Human Gene ID	575
Human Swiss-Prot Number	O14514
Background	Brain-specific angiogenesis inhibitor 1 is a protein that in humans is encoded by the BAI1 gene. It is a member of the adhesion-GPCR family of receptors.

Selected Validation Data



Western blot analysis of 1) 293T, 2) Mouse Brain Tissue, 3) Rat Brain Tissue with BAI1 Rabbit pAb diluted at 1:2,000.



Immunohistochemical analysis of paraffin-embedded Rat Brain Tissue using BAI1 Rabbit pAb diluted at 1:200.