

S100 Rabbit Polyclonal Antibody(F229)

Catalog No: RA20199

Basic Information

Host species	Rabbit
Applications	WB, IHC
Species Cross-Reactivity	H, R, M
Specificity	Antibody can detects endogenous S100 protein.
Recommended dilutions	WB: 1:1,000-2,000 IHC: 1:50-100 Optimal dilutions should be determined by the end user.

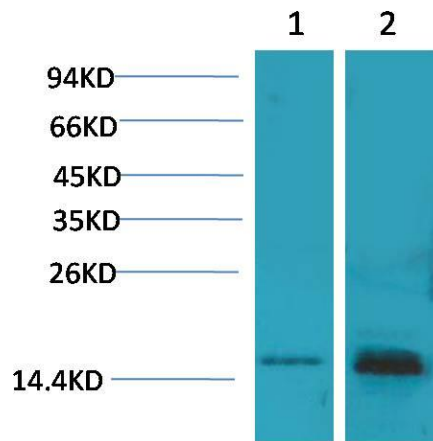
Applications

Formulation	Antigen Affinity Purified IgG in PBS, pH 7.4, containing 0.02% sodium azide as Preservative and 50% Glycerol.
Storage	Store at -20°C. Avoid repeated freeze-thaw cycles.
Concentration	1 mg/ml
Clonality	Polyclonal

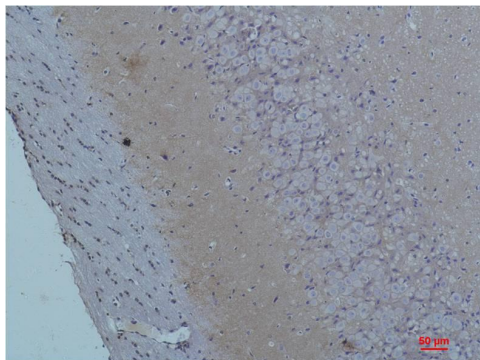
Background

Alternative Names	Bpb antibody, NEF antibody, protein S100-A1 antibody
Observed band	15
Human Gene ID	6271
Human Swiss-Prot Number	P23297
Background	The S100 proteins are a family of low-molecular-weight proteins found in vertebrates and characterized by two calcium-binding sites that have helix-loop-helix ("EF-hand type") conformation.

Selected Validation Data



Western blot analysis of 1) 293T, 2) Mouse Brain Tissue with S100 Rabbit pAb diluted at 1:2,000.



Immunohistochemical analysis of paraffin-embedded Rat Brain Tissue using S100 Rabbit pAb diluted at 1:200.