

eEF1A2 Binding Protein Rabbit Polyclonal Antibody(GT)

Catalog No: RA20198

Basic Information

Host species	Rabbit
Applications	WB, IHC
Species Cross-Reactivity	H, R, M, Pg
Specificity	Antibody can detects endogenous eEF1A2 binding protein.
Recommended dilutions	WB: 1:500-1,000 IHC: 1:50-100 Optimal dilutions should be determined by the end user.

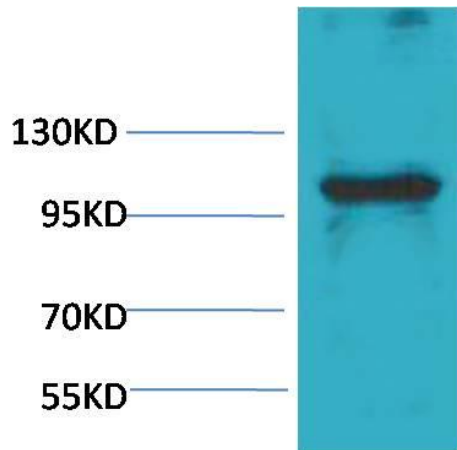
Applications

Formulation	Antigen Affinity Purified IgG in PBS, pH 7.4, containing 0.02% sodium azide as Preservative and 50% Glycerol.
Storage	Store at -20°C. Avoid repeated freeze-thaw cycles.
Concentration	1 mg/ml
Clonality	Polyclonal

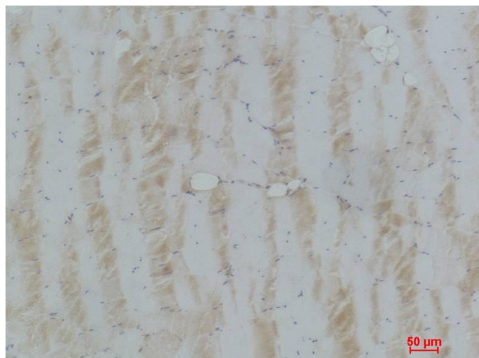
Background

Alternative Names	IGFN1 antibody, immunoglobulin-like and fibronectin type III domain containing 1 antibody, EEF1A2BP1 antibody
Observed band	115
Human Gene ID	91156
Human Swiss-Prot Number	Q86VF2
Background	Elongation factor 1-alpha 2 is a protein that in humans is encoded by the EEF1A2 gene. This gene encodes an isoform of the alpha subunit of the elongation factor-1 complex, which is responsible for the enzymatic delivery of aminoacyl tRNAs to the ribosome.

Selected Validation Data



Western blot analysis of Pig Skeletal Muscle with eEF1A2 Rabbit pAb diluted at 1:1,000.



Immunohistochemical analysis of paraffin-embedded Pig Skeletal Muscle using eEF1A2 Rabbit pAb diluted at 1:100.