

STAT5a Rabbit Polyclonal Antibody(F251)

Catalog No: RA20195

Basic Information

Host species	Rabbit
Applications	WB, IHC
Species Cross-Reactivity	R, M
Specificity	Antibody can detects endogenous STAT5a protein.
Recommended dilutions	WB: 1:1,000-2,000 IHC: 1:200-500 Optimal dilutions should be determined by the end user.

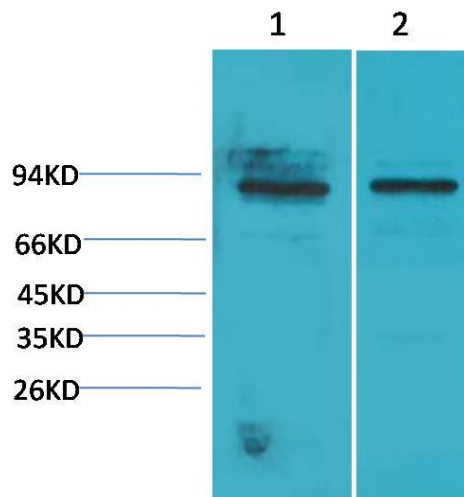
Applications

Formulation	Antigen Affinity Purified IgG in PBS, pH 7.4, containing 0.02% sodium azide as Preservative and 50% Glycerol.
Storage	Store at -20°C. Avoid repeated freeze-thaw cycles.
Concentration	1 mg/ml
Clonality	Polyclonal

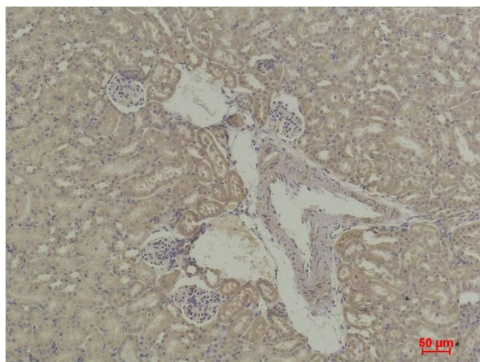
Background

Alternative Names	MGF antibody, STAT5 antibody, Signal transducer and activator of transcription 5A antibody
Observed band	90
Human Gene ID	6776
Human Swiss-Prot Number	P42229
Background	Signal transducer and activator of transcription 5A is a protein that in humans is encoded by the STAT5A gene. Stat5a and Stat5b are independently regulated and activated in various cell types. For instance, interferon treatment predominantly activates Stat5a in U-937 cells and Stat5b in HeLa cells.

Selected Validation Data



Western blot analysis of 1) Mouse Heart Tissue, 2) Rat Heart Tissue with STAT5a Rabbit pAb diluted at 1:2,000.



Immunohistochemical analysis of paraffin-embedded Mouse Kidney Tissue using STAT5a Rabbit pAb diluted at 1:500.