

c-Jun Rabbit Polyclonal Antibody(F127)

Catalog No: RA20194

Basic Information

Host species	Rabbit
Applications	WB, IHC
Species Cross-Reactivity	H, M
Specificity	Antibody can detects endogenous c-Jun protein.
Recommended dilutions	WB: 1:1,000-2,000 IHC: 1:50-100 Optimal dilutions should be determined by the end user.

Applications

Formulation	Antigen Affinity Purified IgG in PBS, pH 7.4, containing 0.02% sodium azide as Preservative and 50% Glycerol.
Storage	Store at -20°C. Avoid repeated freeze-thaw cycles.
Concentration	1 mg/ml
Clonality	Polyclonal

Background

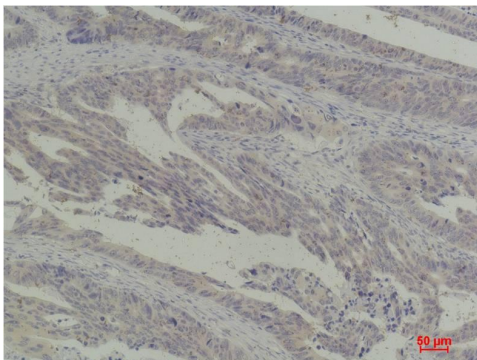
Alternative Names	Activator Protein 1 antibody, AP1 antibody, p39 antibody
Observed band	43
Human Gene ID	3725
Human Swiss-Prot Number	P05427
Background	c-Jun is a member of the Jun Family containing c-Jun, JunB and JunD, and is a component of the transcription factor AP-1 (activator protein-1).

Selected Validation Data

错误！未指定文件名。



Western blot analysis of 1) 293T, 2)Hela, 3) 3T3 with c-Jun Rabbit pAb diluted at 1:2,000.



Immunohistochemical analysis of paraffin-embedded Human Breast Carcinoma using c-Jun Rabbit pAb diluted at 1:200.