

STAT5b Rabbit Polyclonal Antibody(F255)

Catalog No: RA20193

Basic Information

Host species	Rabbit
Applications	WB, IHC
Species Cross-Reactivity	H, R, M
Specificity	Antibody can detects endogenous STAT5b protein.
Recommended dilutions	WB: 1:1,000-2,000 IHC: 1:100-200 Optimal dilutions should be determined by the end user.

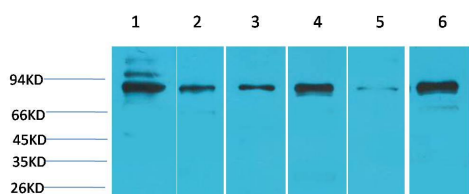
Applications

Formulation	Antigen Affinity Purified IgG in PBS, pH 7.4, containing 0.02% sodium azide as Preservative and 50% Glycerol.
Storage	Store at -20°C. Avoid repeated freeze-thaw cycles.
Concentration	1 mg/ml
Clonality	Polyclonal

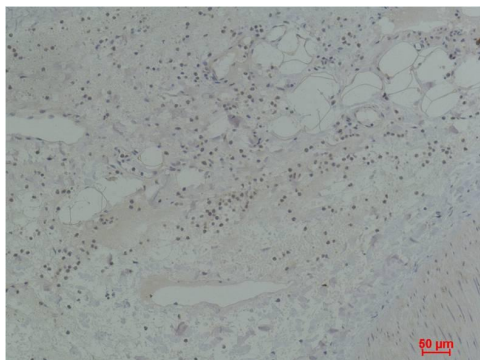
Background

Alternative Names	STAT5 antibody, signal transducer and activator of transcription 5b antibody
Observed band	90
Human Gene ID	6777
Human Swiss-Prot Number	P51692
Background	Signal transducer and activator of transcription 5B is a protein that in humans is encoded by the STAT5B gene. STAT5B orthologs have been identified in most placentals for which complete genome data are available.

Selected Validation Data



Western blot analysis of 1) K562, 2) Hela, 3) 3T3, 4) Mouse Heart Tissue, 5) PC12, 6) Rat Heart Tissue with STAT5bRabbit pAb diluted at 1:2,000.



Immunohistochemical analysis of paraffin-embedded Human Spleen Tissue using STAT5b Rabbit pAb diluted at 1:200.