

Cyclin D1 Rabbit Polyclonal Antibody(F279)

Catalog No: RA20191

Basic Information

Host species	Rabbit
Applications	WB, IHC
Species Cross-Reactivity	R, M
Specificity	Antibody can detects endogenous Cyclin D1 protein.
Recommended dilutions	WB: 1:500-1,000 IHC: 1:100-200 Optimal dilutions should be determined by the end user.

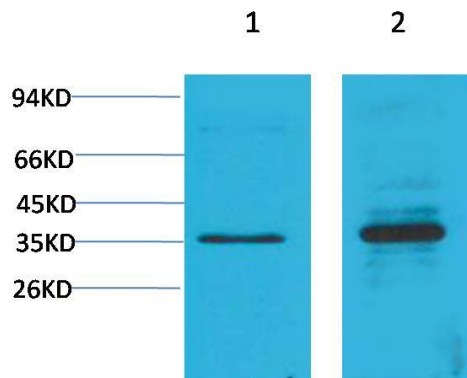
Applications

Formulation	Antigen Affinity Purified IgG in PBS, pH 7.4, containing 0.02% sodium azide as Preservative and 50% Glycerol.
Storage	Store at -20°C. Avoid repeated freeze-thaw cycles.
Concentration	1 mg/ml
Clonality	Polyclonal

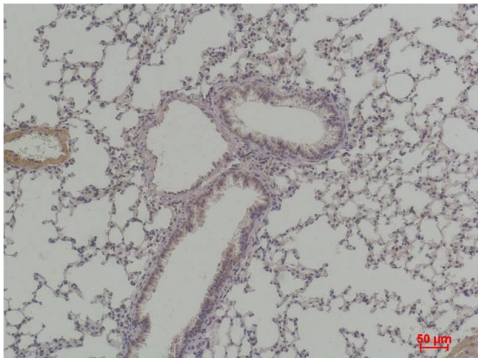
Background

Alternative Names	B cell leukemia 1 antibody, BCL-1 antibody, CCND1 antibody, MGC137744 antibody, PRAD1 antibody
Observed band	36
Human Gene ID	595
Human Swiss-Prot Number	P24385
Background	Cyclin D is a member of the cyclin protein family that is involved in regulating cell cycle progression. The synthesis of cyclin D is initiated during G1 and drives the G1/S phase transition.

Selected Validation Data



Western blot analysis of 1) C2C12, 2) Rat Heart Tissue with Cyclin D1 Rabbit pAb diluted at 1:2,000.



Immunohistochemical analysis of paraffin-embedded Mouse Lung Tissue using Cyclin D1 Rabbit pAb diluted at 1:200.