

Cyclin B1 Rabbit Polyclonal Antibody(F276)

Catalog No: RA20190

Basic Information

Host species	Rabbit
Applications	WB, IHC
Species Cross-Reactivity	H, R, M
Specificity	Antibody can detects endogenous Cyclin B1 protein.
Recommended dilutions	WB: 1:1,000-2,000 IHC: 1:200-500 Optimal dilutions should be determined by the end user.

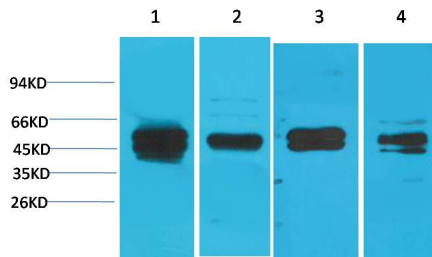
Applications

Formulation	Antigen Affinity Purified IgG in PBS, pH 7.4, containing 0.02% sodium azide as Preservative and 50% Glycerol.
Storage	Store at -20°C. Avoid repeated freeze-thaw cycles.
Concentration	1 mg/ml
Clonality	Polyclonal

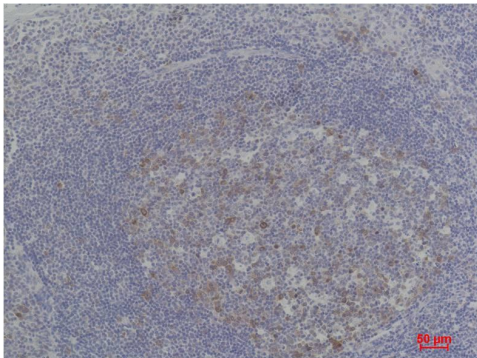
Background

Alternative Names	CCNB1 antibody, G2 mitotic specific cyclin B1 antibody
Observed band	55
Human Gene ID	891
Human Swiss-Prot Number	P14635
Background	Cyclin B1 is a regulatory protein involved in mitosis. The gene product complexes with p34 (Cdk1) to form the maturation-promoting factor (MPF). Two alternative transcripts have been found, a constitutively expressed transcript and a cell cycle-regulated transcript that is expressed predominantly during G2/M phase of the cell cycle.

Selected Validation Data



Western blot analysis of 1) Jurkat, 2) HeLa, 3) C2C12, 4) Rat Liver Tissue with Cyclin B1 Rabbit pAb diluted at 1:2,000.



Immunohistochemical analysis of paraffin-embedded Human Tonsil Carcinoma using Cyclin B1 Rabbit pAb diluted at 1:500.