

Smad2 Rabbit Polyclonal Antibody(F231)

Catalog No: RA20187

Basic Information

Host species	Rabbit
Applications	WB, IHC
Species Cross-Reactivity	H, R, M
Specificity	Antibody can detects endogenous Smad2 protein.
Recommended dilutions	WB: 1:1,000-2,000 IHC: 1:100-200 Optimal dilutions should be determined by the end user.

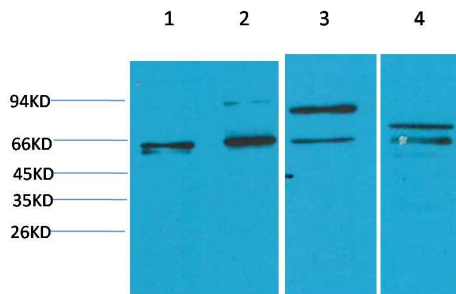
Applications

Formulation	Antigen Affinity Purified IgG in PBS, pH 7.4, containing 0.02% sodium azide as Preservative and 50% Glycerol.
Storage	Store at -20°C. Avoid repeated freeze-thaw cycles.
Concentration	1 mg/ml
Clonality	Polyclonal

Background

Alternative Names	hMAD2 antibody, JV18 antibody, MAD antibody, MADH2 antibody, MGC22139 antibody
Observed band	60
Human Gene ID	4087
Human Swiss-Prot Number	Q157976
Background	SMAD2 is a protein that in humans is encoded by the SMAD2 gene. SMAD proteins are signal transducers and transcriptional modulators that mediate multiple signaling pathways. SMAD2 mediates the signal of the transforming growth factor (TGF)-beta, and thus regulates multiple cellular processes, such as cell proliferation, apoptosis, and differentiation. This protein is recruited to the TGF-beta receptors through its interaction with the SMAD anchor for receptor activation (SARA) protein.

Selected Validation Data



Western blot analysis of 1) HeLa, 2) Jurkat, 3) C2C12, 4) PC12 with Smad2 Rabbit pAb diluted at 1:2,000.