

# STAT4 Rabbit Polyclonal Antibody(F250)

## Catalog No: RA20185

### Basic Information

Host species	Rabbit
Applications	WB, IHC
Species Cross-Reactivity	H
Specificity	Antibody can detects endogenous STAT4 protein.
Recommended dilutions	WB: 1:1,000-2,000      IHC: 1:100-200 Optimal dilutions should be determined by the end user.

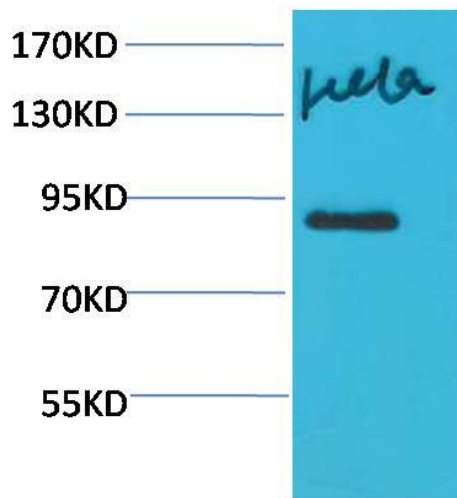
### Applications

Formulation	Antigen Affinity Purified IgG in PBS, pH 7.4, containing 0.02% sodium azide as Preservative and 50% Glycerol.
Storage	Store at -20°C. Avoid repeated freeze-thaw cycles.
Concentration	1 mg/ml
Clonality	Polyclonal

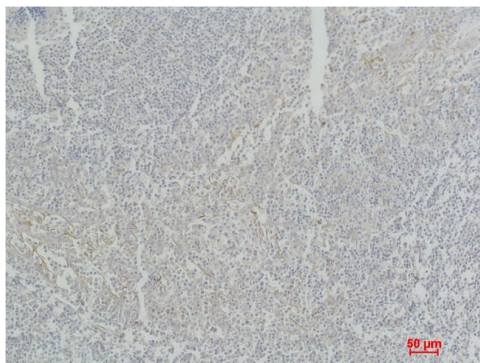
### Background

Alternative Names	SLEB11 antibody, signal transducer and activator of transcription 4 antibody
Observed band	86
Human Gene ID	6775
Human Swiss-Prot Number	Q14765
Background	STAT4 is a transcription factor belonging to the Signal Transducer and Activator of Transcription protein family. It is required for the development of Th1 cells from naive CD4+ T cells and IFN- $\gamma$ production in response to IL-12.

Selected Validation Data



Western blot analysis of HeLa with STAT4 Rabbit pAb diluted at 1:2,000.



Immunohistochemical analysis of paraffin-embedded Human Tonsil Tissue using STAT4 Rabbit pAb diluted at 1:500.