

HSPB8 HSP22 Rabbit Polyclonal Antibody(F167)

Catalog No: RA20183

Basic Information

Host species	Rabbit
Applications	WB
Species Cross-Reactivity	H
Specificity	Antibody can detects endogenous HSPB8/HSP22 protein.
Recommended dilutions	WB: 1:500-1,000 Optimal dilutions should be determined by the end user.

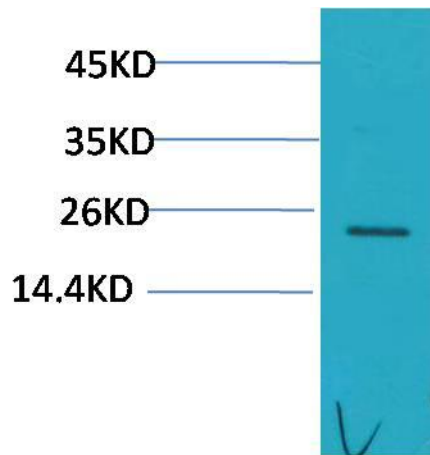
Applications

Formulation	Antigen Affinity Purified IgG in PBS, pH 7.4, containing 0.02% sodium azide as Preservative and 50% Glycerol.
Storage	Store at -20°C. Avoid repeated freeze-thaw cycles.
Concentration	1 mg/ml
Clonality	Polyclonal

Background

Alternative Names	Alpha crystallin C chain antibody, Heat shock 22KDa protein 8 antibody, HMN 2 antibody
Observed band	22
Human Gene ID	26353
Human Swiss-Prot Number	Q9UJY1
Background	Heat shock protein beta-8 is a protein that in humans is encoded by the HSPB8 gene. HSPB8 (HSP22) is a member of the small heat shock protein superfamily and the human protein is most closely related to HSP27.

Selected Validation Data



Western blot analysis of HeLa with HSPB8/HSP22 Rabbit pAb diluted at 1:1,000.