

P21 Rabbit Polyclonal Antibody(F210)

Catalog No: RA20182

Basic Information

Host species	Rabbit
Applications	WB, IHC
Species Cross-Reactivity	H, R, M
Specificity	Antibody can detects endogenous P21 protein.
Recommended dilutions	WB: 1:1,000-2,000 IHC: 1:100-200 Optimal dilutions should be determined by the end user.

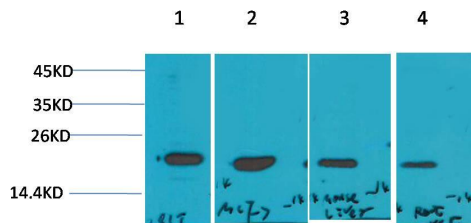
Applications

Formulation	Antigen Affinity Purified IgG in PBS, pH 7.4, containing 0.02% sodium azide as Preservative and 50% Glycerol.
Storage	Store at -20°C. Avoid repeated freeze-thaw cycles.
Concentration	1 mg/ml
Clonality	Polyclonal

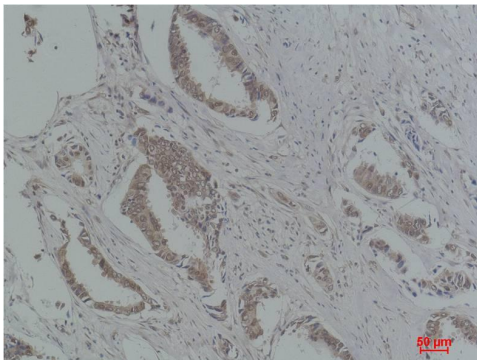
Background

Alternative Names	CDKN1 antibody, CDKI antibody, CDKN1A antibody, MDA 6 antibody, p21 cip1 antibody, p21waf antibody
Observed band	21
Human Gene ID	1026
Human Swiss-Prot Number	P38936
Background	p21 / WAF1 / CIP1 also known as cyclin-dependent kinase inhibitor 1 or CDK-interacting protein 1 is a protein that in humans is encoded by the CDKN1A gene. p21 is a potent cyclin-dependent kinase inhibitor (CKI). The p21 (CIP1/WAF1) protein binds to and inhibits the activity of cyclin-CDK2, -CDK1, and -CDK4/6 complexes, and thus functions as a regulator of cell cycle progression at G1 and S phase.

Selected Validation Data



Western blot analysis of 1) 293T, 2)MCF7, 3)Mouse Liver Tissue, 4) Rat Liver Tissue with P21 Rabbit pAb diluted at 1:2,000.



Immunohistochemical analysis of paraffin-embedded Human Breast Carcinoma using P21 Rabbit pAb diluted at 1:200.