

Akt2 Rabbit Polyclonal Antibody(F204)

Catalog No: RA20181

Basic Information

Host species	Rabbit
Applications	WB, IHC
Species Cross-Reactivity	H, R, M
Specificity	Antibody can detects endogenous Akt2 protein.
Recommended dilutions	WB: 1:500-1,000 IHC: 1:100-200 Optimal dilutions should be determined by the end user.

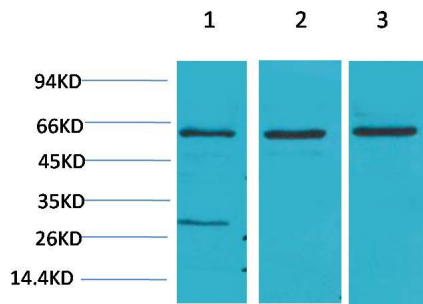
Applications

Formulation	Antigen Affinity Purified IgG in PBS, pH 7.4, containing 0.02% sodium azide as Preservative and 50% Glycerol.
Storage	Store at -20°C. Avoid repeated freeze-thaw cycles.
Concentration	1 mg/ml
Clonality	Polyclonal

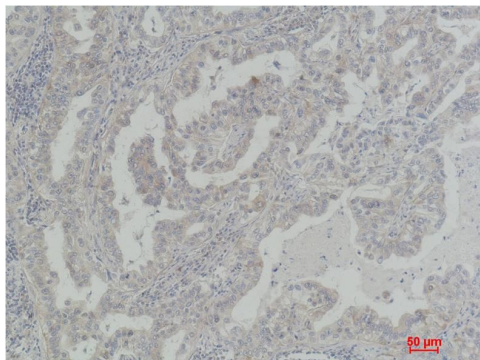
Background

Alternative Names	PKB antibody, PKB beta antibody, PKBB antibody, RAC beta antibody, RAC-PK-beta antibody
Observed band	60
Human Gene ID	208
Human Swiss-Prot Number	P31751
Background	RAC-beta serine/threonine-protein kinase is an enzyme that in humans is encoded by the AKT2 gene. This gene is a putative oncogene encoding a protein belonging to the AKT subfamily of serine/threonine kinases that contain SH2-like (Src homology 2-like) domains. The encoded protein is a general protein kinase capable of phosphorylating several known proteins.

Selected Validation Data



Western blot analysis of 1) HeLa, 2)3T3, 3)PC12 with Akt2 Rabbit pAb diluted at 1:2,000.



Immunohistochemical analysis of paraffin-embedded Human Lung Carcinoma using Akt2 Rabbit pAb diluted at 1:200.