

# STAT3 Rabbit Polyclonal Antibody(F246)

## Catalog No: RA20180

### Basic Information

Host species	Rabbit
Applications	WB, IHC
Species Cross-Reactivity	H
Specificity	Antibody can detects endogenous STAT3 protein.
Recommended dilutions	WB: 1:1,000-2,000      IHC: 1:200-500 Optimal dilutions should be determined by the end user.

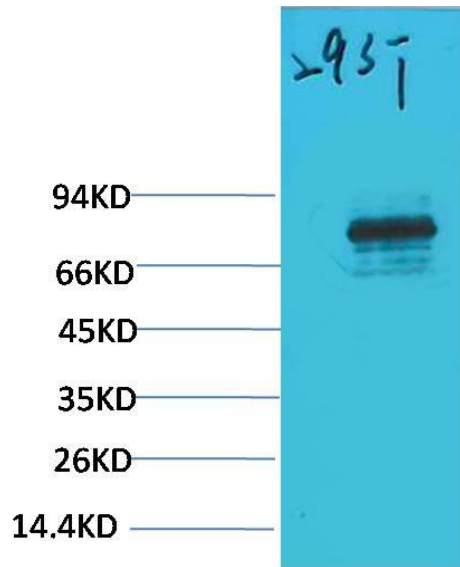
### Applications

Formulation	Antigen Affinity Purified IgG in PBS, pH 7.4, containing 0.02% sodium azide as Preservative and 50% Glycerol.
Storage	Store at -20°C. Avoid repeated freeze-thaw cycles.
Concentration	1 mg/ml
Clonality	Polyclonal

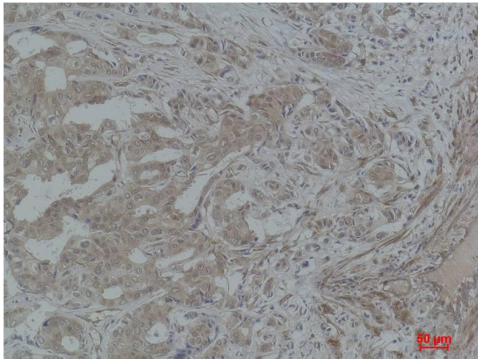
### Background

Alternative Names	APRF antibody, HIES antibody, Signal transducer and activator of transcription 3 antibody
Observed band	79,86
Human Gene ID	6774
Human Swiss-Prot Number	P40763
Background	Signal transducer and activator of transcription 3, also known as STAT3, is a transcription factor which in humans is encoded by the STAT3 gene. Stat3 is constitutively activated in a number of human tumors and possesses oncogenic potential and anti-apoptotic activities.

Selected Validation Data



Western blot analysis of 293T with STAT3 Rabbit pAb diluted at 1:2,000.



Immunohistochemical analysis of paraffin-embedded Human Breast Carcinoma using STAT3 Rabbit pAb diluted at 1:500.