

α -actinin Rabbit Polyclonal Antibody(F298)

Catalog No: RA20176

Basic Information

Host species	Rabbit
Applications	WB, IHC
Species Cross-Reactivity	R, M
Specificity	Antibody can detects endogenous α -actinin protein.
Recommended dilutions	WB: 1:1,000-2,000 IHC: 1:200-500 Optimal dilutions should be determined by the end user.

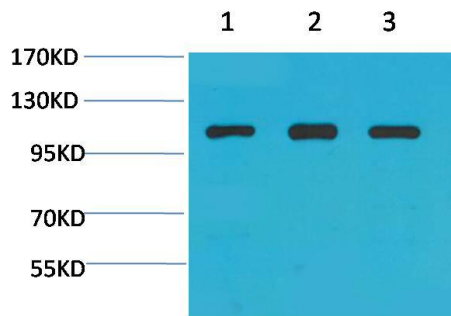
Applications

Formulation	Antigen Affinity Purified IgG in PBS, pH 7.4, containing 0.02% sodium azide as Preservative and 50% Glycerol.
Storage	Store at -20°C. Avoid repeated freeze-thaw cycles.
Concentration	1 mg/ml
Clonality	Polyclonal

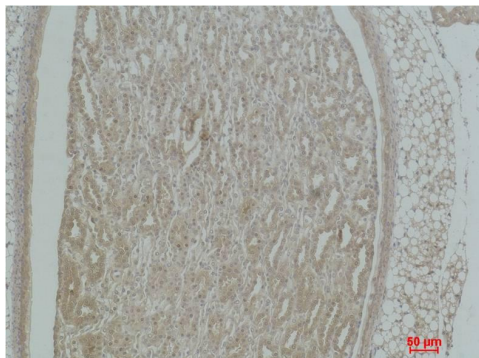
Background

Alternative Names	actinin 1 smooth muscle antibody, actinin alpha 1 antibody, ACTN 1 antibody, FLJ40884 antibody
Observed band	103
Human Gene ID	87
Human Swiss-Prot Number	P12814
Background	α -Actinin belongs to the spectrin family of cytoskeletal proteins. α -Actinin is necessary for the attachment of actin filaments to the Z-lines in skeletal muscle cells, and to the dense bodies in smooth muscle cells. The functional protein is an anti-parallel dimer, which cross-links the thin filaments in adjacent sarcomeres, and therefore coordinated contractions between sarcomeres in the horizontal axis.

Selected Validation Data



Western blot analysis of 1) 3T3, 2)PC12, 3)Rat Heart Tissue with α -actinin Rabbit pAb diluted at 1:2,000.



Immunohistochemical analysis of paraffin-embedded Mouse Kidney Tissue using α -actinin Rabbit pAb diluted at 1:500.