

STAT1 Rabbit Polyclonal Antibody(F241)

Catalog No: RA20172

Basic Information

Host species	Rabbit
Applications	WB, IHC
Species Cross-Reactivity	H, R, M
Specificity	Antibody can detects endogenous STAT1 protein.
Recommended dilutions	WB: 1:1,000-2,000 IHC: 1:200-500 Optimal dilutions should be determined by the end user.

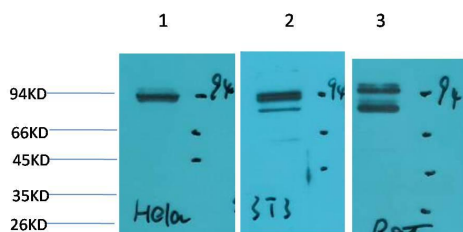
Applications

Formulation	Antigen Affinity Purified IgG in PBS, pH 7.4, containing 0.02% sodium azide as Preservative and 50% Glycerol.
Storage	Store at -20°C. Avoid repeated freeze-thaw cycles.
Concentration	1 mg/ml
Clonality	Polyclonal

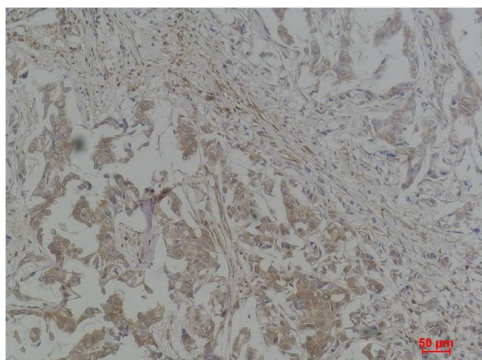
Background

Alternative Names	CANDF7 antibody, ISGF3 antibody, DKFZp686B04100 antibody
Observed band	84,91
Human Gene ID	6772
Human Swiss-Prot Number	P42224
Background	STAT1 is a member of the Signal Transducers and Activators of Transcription family of transcription factors. STAT1 is involved in upregulating genes due to a signal by either type I, type II, or type III interferons.

Selected Validation Data



Western blot analysis of 1) HeLa, 2)3T3, 3)Rat Heart Tissue with STAT1 Rabbit pAb diluted at 1:2,000.



Immunohistochemical analysis of paraffin-embedded Human Breast Carcinoma using STAT1 Rabbit pAb diluted at 1:500.